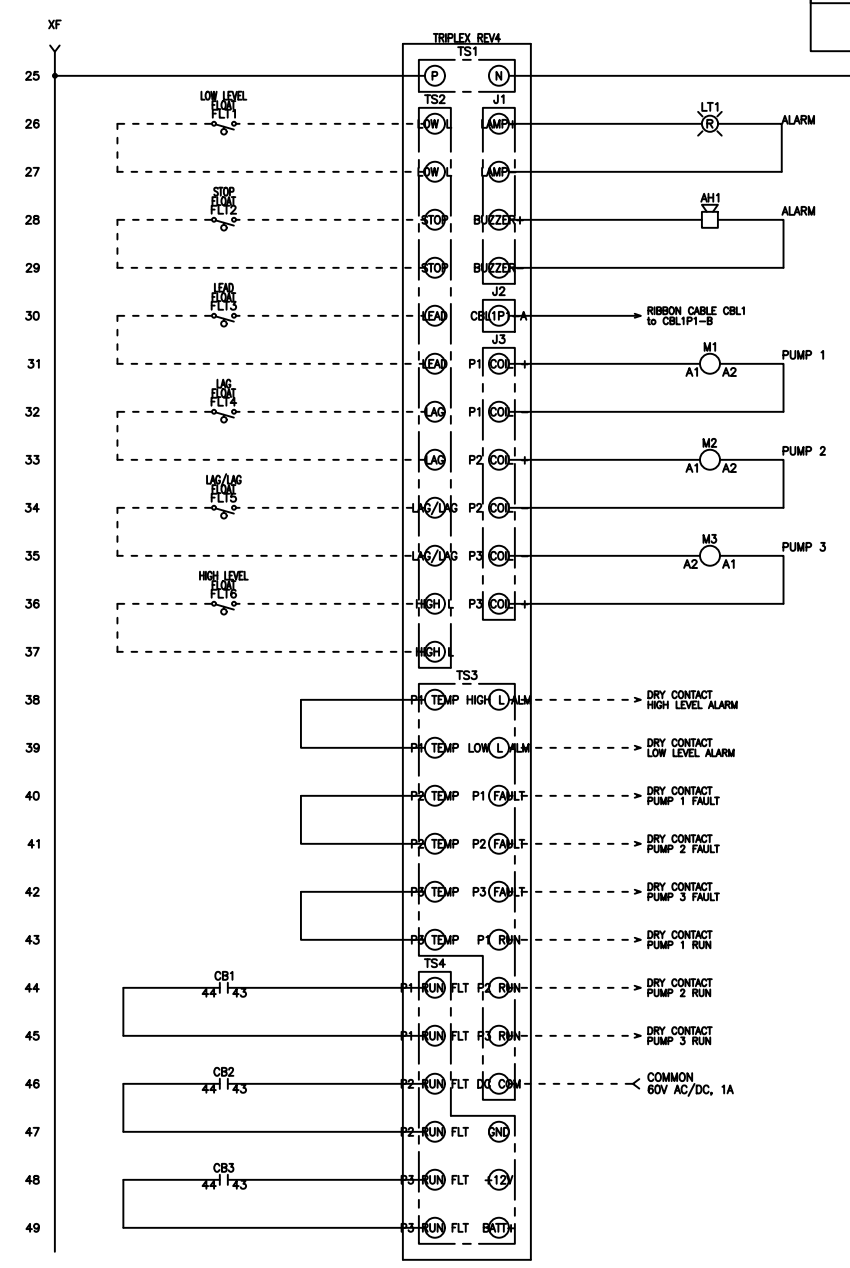
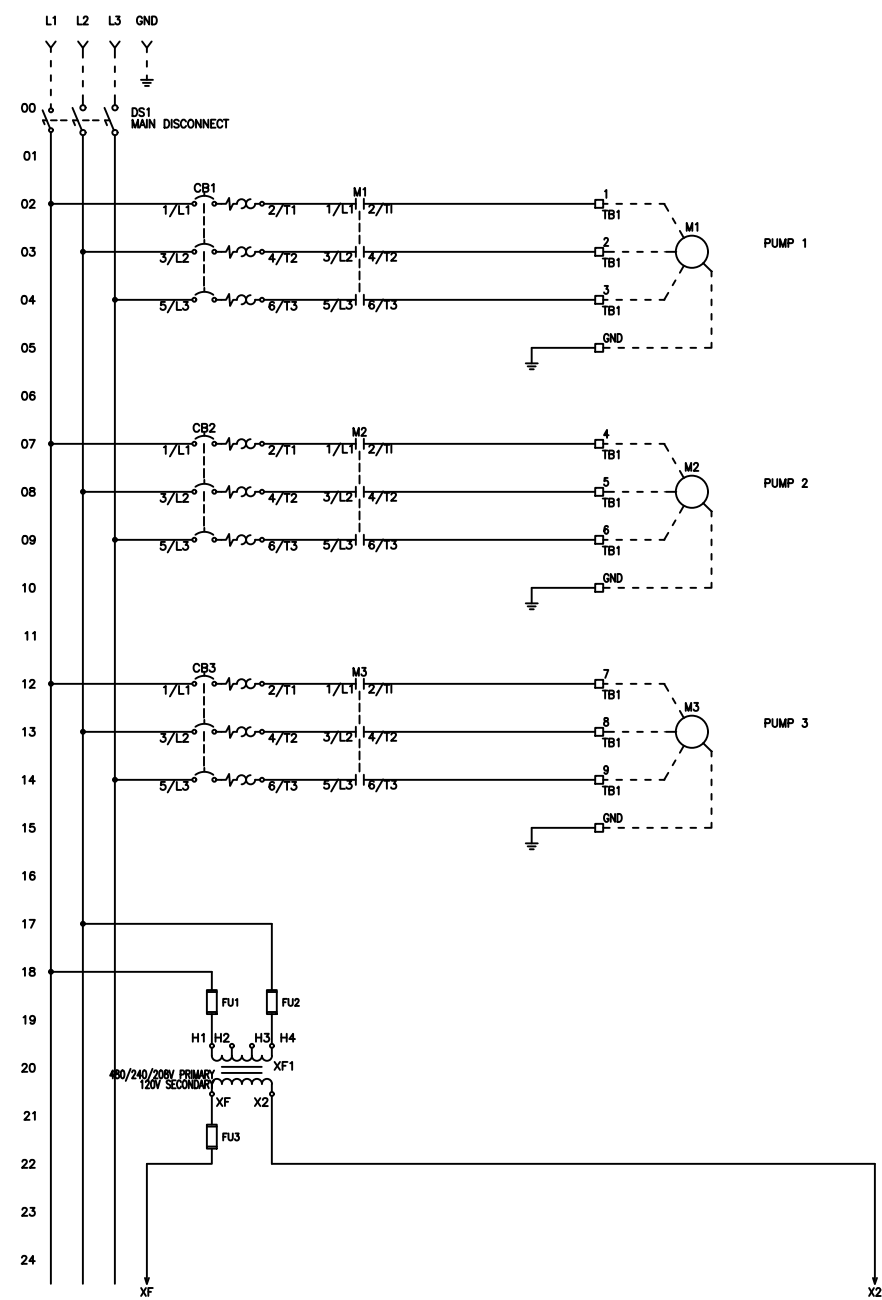


FNAME: WT3P-6-X

REVDATE: 1018

REVISIONS				
ZONE	REV	DESCRIPTION	DATE	APPROVED
	A	UPDATED INSTRUCTIONS	6/2/17	
	B	ADDITION OF OPEN CB1,2,3. REMOVED TB4	6/26/18	
	C	UPDATED TB1 REMOVED TB2,TB3	10/03/18	
x2	D	Transformer Label X1 to XF	4/29/19	



MULTITAP TRANSFORMER INSTRUCTIONS:

CONNECT FACTORY TAGGED WIRES TO APPROPRIATE TRANSFORMER VOLTAGE TAP. SEE BELOW FOR CONNECTIONS:

FOR 208V OPERATION, CONNECT TO FUSE INPUT HF & TO TRANSFORMER TAP H2

FOR 240V OPERATION, CONNECT TO FUSE INPUT HF & TO TRANSFORMER TAP H3

FOR 480V OPERATION, CONNECT TO FUSE INPUT HF & TO TRANSFORMER TAP H4

----- DASHED LINE INDICATES FIELD WIRING.

USE COPPER CONDUCTORS ONLY.

TEMPERATURE RATING OF CONDUCTORS IS TO BE 60°C (167°F).

BRANCH CIRCUIT PROTECTION SHALL BE PROVIDED BY THE INSTALLER. MUST BE SIZED ACCORDING TO PUMP/MOTOR MANUFACTURING SPECIFICATIONS.

VERIFY CORRECT OPERATION OF CONTROL PANEL AFTER INSTALLATION IS COMPLETE.

DRAWN BY: KJ
DATE: 4/18/17

APPROVED BY: _____
DATE: _____



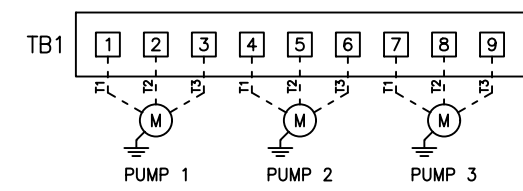
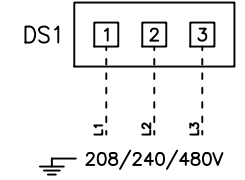
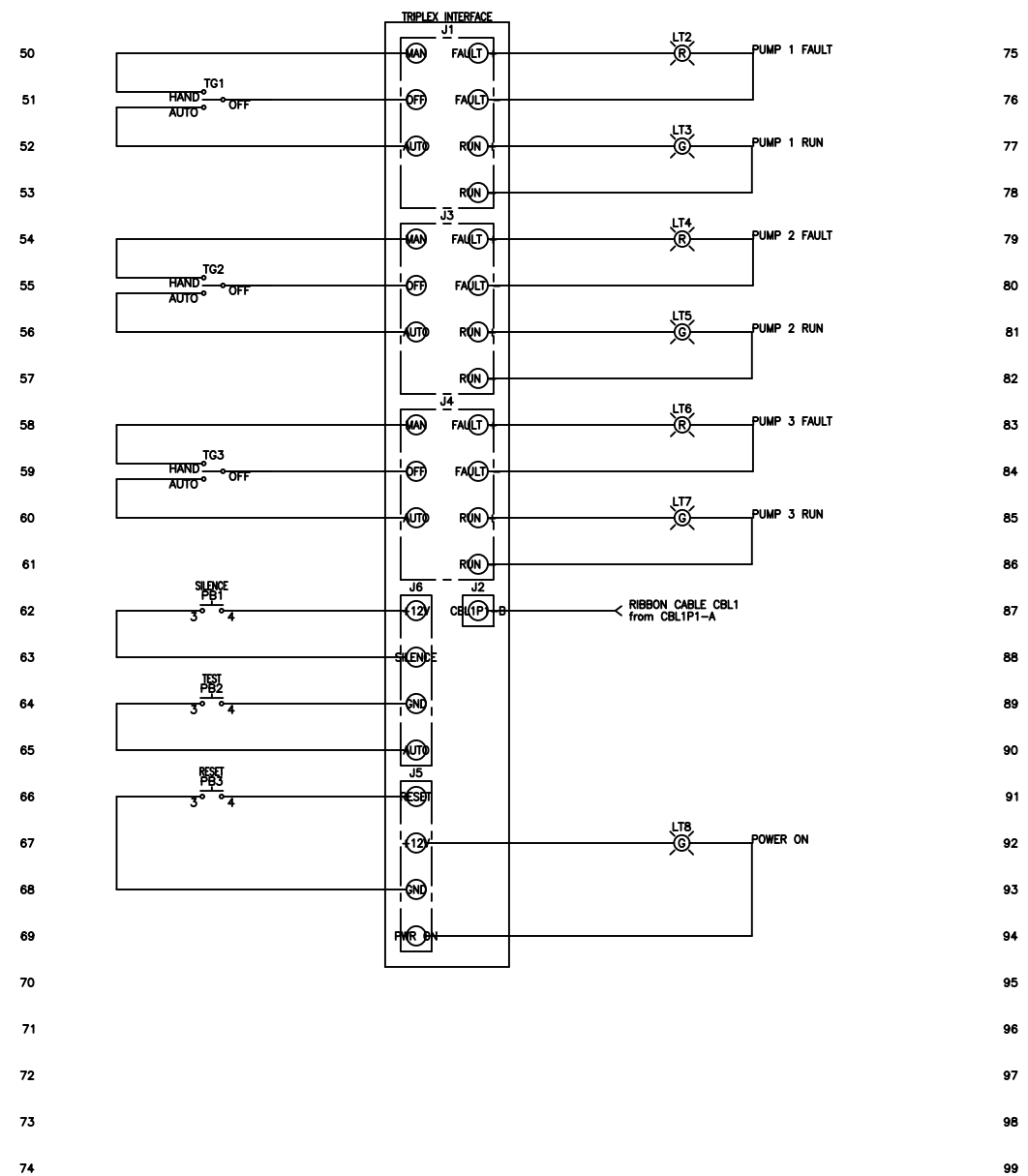
THIS DRAWING CONTAINS PROPRIETARY INFORMATION AND SHALL NOT BE USED OR DISCLOSED WITHOUT PRIOR WRITTEN AUTHORIZATION.

TITLE: WT3P-6-X CONTROL SCHEMATIC				
SIZE: B	DWG NO.: 1616	PART NO.: WT3P-6-X	REV: D	
SCALE: NONE	SHEET: 1 OF 2			

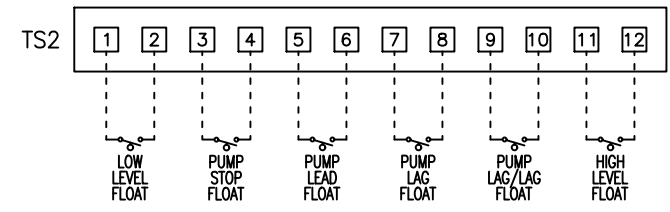
FNAME: WT3P-6-X

REVDATE: 1018

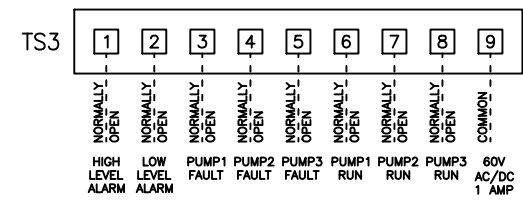
REVISIONS				
ZONE	REV	DESCRIPTION	DATE	APPROVED
	A	UPDATED INSTRUCTIONS	6/2/17	
	B	ADDITION OF OPEN CB1,2,3. REMOVED TB4	6/26/18	
	C	UPDATED TB1 REMOVED TB2,TB3	10/03/18	
	D	Transformer Label X1 FIELD WIRING CONNECTIONS	4/29/19	



TS2 PINOUT
 PIN 1: LOW L
 PIN 2: LOW L
 PIN 3: STOP
 PIN 4: STOP
 PIN 5: LEAD
 PIN 6: LEAD
 PIN 7: LAG
 PIN 8: LAG
 PIN 9: LAG/LAG
 PIN 10: LAG/LAG
 PIN 11: HIGH L
 PIN 12: HIGH L



TS3 PINOUT
 PIN 1: HIGH L ALM
 PIN 2: LOW L ALM
 PIN 3: P1 FAULT
 PIN 4: P2 FAULT
 PIN 5: P3 FAULT
 PIN 6: P1 RUN
 PIN 7: P2 RUN
 PIN 8: P3 RUN
 PIN 9: COMMON



DRY CONTACT INDICATORS

MULTITAP TRANSFORMER INSTRUCTIONS:
 CONNECT FACTORY TAGGED WIRES TO APPROPRIATE TRANSFORMER VOLTAGE TAP. SEE BELOW FOR CONNECTIONS:
 FOR 208V OPERATION, CONNECT TO FUSE INPUT HF & TO TRANSFORMER TAP H2
 FOR 240V OPERATION, CONNECT TO FUSE INPUT HF & TO TRANSFORMER TAP H3
 FOR 480V OPERATION, CONNECT TO FUSE INPUT HF & TO TRANSFORMER TAP H4

----- DASHED LINE INDICATES FIELD WIRING.

USE COPPER CONDUCTORS ONLY.
 TEMPERATURE RATING OF CONDUCTORS IS TO BE 60°C (167°F).
 BRANCH CIRCUIT PROTECTION SHALL BE PROVIDED BY THE INSTALLER. MUST BE SIZED ACCORDING TO PUMP/MOTOR MANUFACTURING SPECIFICATIONS.
 VERIFY CORRECT OPERATION OF CONTROL PANEL AFTER INSTALLATION IS COMPLETE.

DRAWN BY: KJ DATE: 4/18/17
 APPROVED BY: DATE:



THIS DRAWING CONTAINS PROPRIETARY INFORMATION AND SHALL NOT BE USED OR DISCLOSED WITHOUT PRIOR WRITTEN AUTHORIZATION.

TITLE: WT3P-6-X CONTROL SCHEMATIC			
SIZE: B	DWG NO.: 1616	PART NO.: WT3P-6-X	REV: D
SCALE: NONE	SHEET: 2 OF 2		