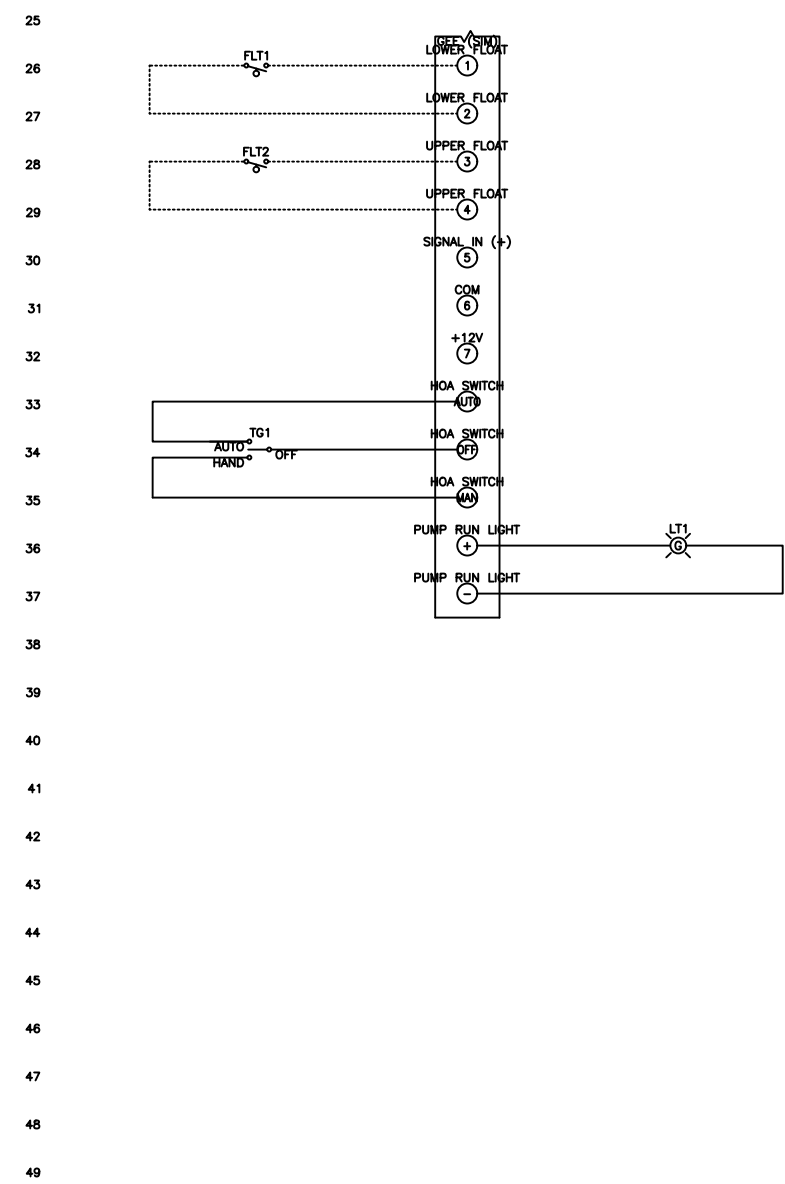
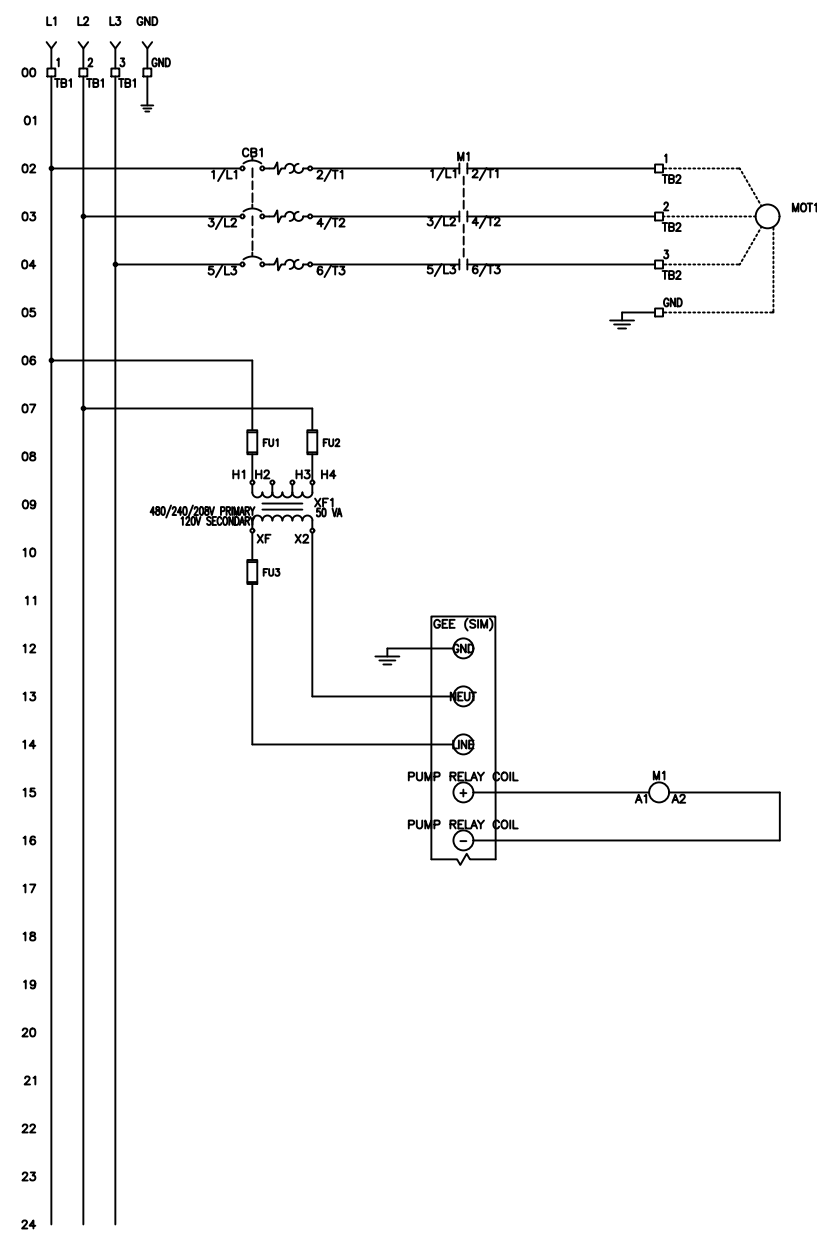
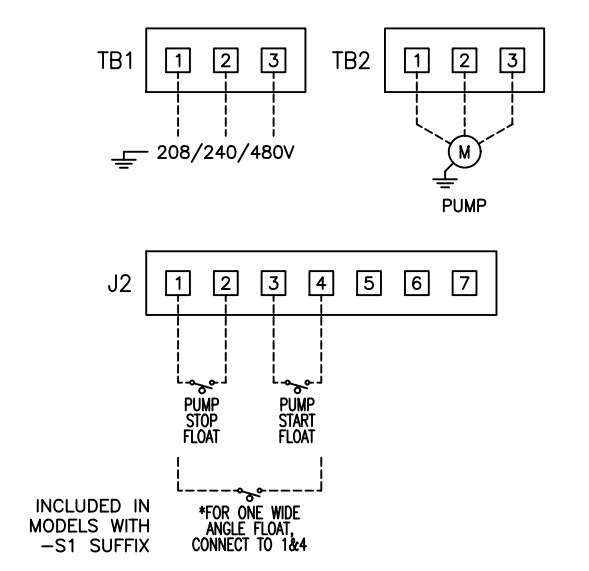


FNAME: SIM3-X
REVDATE: 0917

REVISIONS				
ZONE	REV	DESCRIPTION	DATE	APPROVED
	A	UPDATED INSTRUCTIONS	5/25/17	
	B	TERMINAL STRIP ADJUSTMENT	9/28/17	
	C	Transformer Label X1 to XF	4/29/19	



FIELD WIRING CONNECTIONS



MULTITAP TRANSFORMER INSTRUCTIONS:
 PANEL IS WIRED FOR 480V OPERATION.
 CONNECT FACTORY TAGGED WIRES TO APPROPRIATE TRANSFORMER VOLTAGE TAP. SEE BELOW FOR CONNECTIONS:
 FOR 208V OPERATION, CONNECT TO FUSE INPUT HF & TO TRANSFORMER TAP H2
 FOR 240V OPERATION, CONNECT TO FUSE INPUT HF & TO TRANSFORMER TAP H3

----- DASHED LINE INDICATES FIELD WIRING.

USE COPPER CONDUCTORS ONLY.
 TEMPERATURE RATING OF CONDUCTORS IS TO BE 60°C (167°F).
 BRANCH CIRCUIT PROTECTION SHALL BE PROVIDED BY THE INSTALLER: MUST BE SIZED ACCORDING TO PUMP/MOTOR MANUFACTURING SPECIFICATIONS.
 VERIFY CORRECT OPERATION OF CONTROL PANEL AFTER INSTALLATION IS COMPLETE.

DRAWN BY:	DATE:
KJ	6/22/14
APPROVED BY:	DATE:



THIS DRAWING CONTAINS PROPRIETARY INFORMATION AND SHALL NOT BE USED OR DISCLOSED WITHOUT PRIOR WRITTEN AUTHORIZATION.

TITLE:			
SIM3-X CONTROL SCHEMATIC			
SIZE	DWG NO.	PART NO.	REV
B	1510	SIM3-X	C
SCALE	NONE	SHEET	1 OF 1