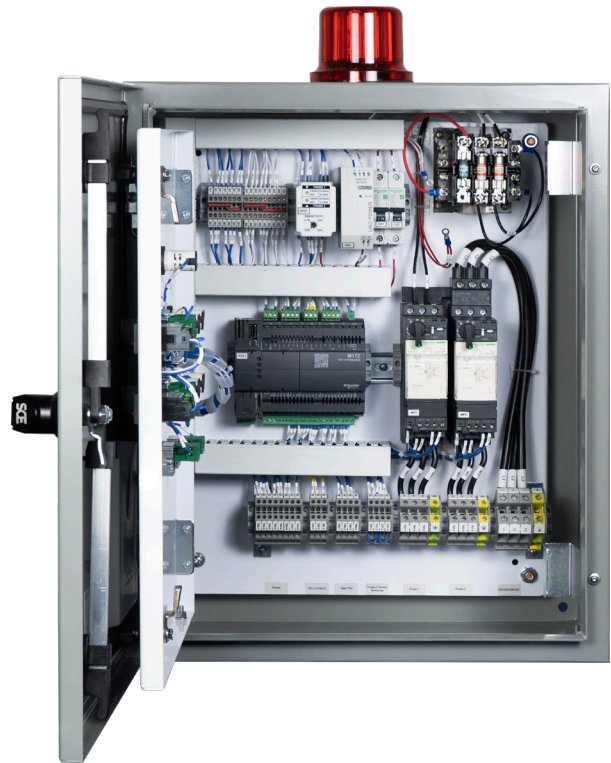


The Trident™ control system is an industrial three phase duplex panel designed to simplify pump stations. See Water incorporates the Modicon PLC for control logic and packs industry communications such as Modbus TCP and BACnet right out the gate. The Trident™ utilizes a power base that allows for easy overload change in a small package of three options. In addition, these control systems come standard with Seal Fail and Thermal Cutout Pump protection.



Features

- NEMA 3R rated painted steel enclosure with a lockable latch and dead-front with inner door
- IEC rated motor starter with adjustable overload
- Fused step-down transformer: 208/240/480V 3Ø
- Duplex provides automatic alternation and high demand two-pump operation
- Pump control visible indicators: 22mm Pump #1 and #2 hand-off-auto (H.O.A.) switch, green Pump Run lights, red Pump Fault lights, and Power On light
- Alarm visible indicators: Red beacon alarm light, and seal fail leak alarm test and silence buttons
- Four float operation: Off, Lead, Lag, High-Level
- Elapsed time meters
- System Integration: Supports Modbus RTU/TCP, BACnet
- UL 508A approved
- Two-year limited warranty



Call us toll-free at 888.733.9283 to speak with one of our expert Sales Engineers.

Applications

- Wastewater, Stormwater, and Industrial Water Lift Stations
- Commercial
- Municipal



951.487.8073 / 888.733.9283

www.seewaterinc.com

info@seewaterinc.com

Duplex Three Phase (208/240/480VAC)

Model	Pump Full Load Amp Rating
TRD	(Adjustable Overloads from 1.25 to 32.0 FLA) <i>(Overloads sold separately)</i>
T31	Adjustable overloads 1.25-5.0 FLA (set of 2)
T32	Adjustable overloads 3.0-12.0 FLA (set of 2)
T33	Adjustable overloads 8.0-32.0 FLA (set of 2)

Custom Options

Option(s)	Description
5	Level Transducer, 5 PSI, Max Water Level 11 ft., Type: Wastewater
10	Level Transducer, 10 PSI, Max Water Level 23 ft., Type: Wastewater
15	Level Transducer, 15 PSI, Max Water Level 35 ft., Type: Wastewater
20	Level Transducer, 20 PSI, Max Water Level 46 ft., Type: Wastewater
<i>Note: TRD with Transducer will come standard with (3) backup floats.</i>	
AF	Alarm Flasher
AH	Anti Condensation Heater
C	Additional Cord Length Per Foot Per Component*
CO	Convenience Outlet (User to supply 120 VAC)
GR	Generator Receptacle, Includes Transfer Switch (Total Amps 125 Max)
ISD	Intrinsically Safe - Duplex
LAD/LAW	Lightning Secondary Surge Arrestor (LAD Delta / LAW Wye)
MD	Main Disconnect - Through Door Style
PM	Phase Monitoring - Ph Loss, Ph Unbalance, Undervoltage, Overvoltage
PX	Pump Portal® Wireless Remote Panel Control and System Monitoring
S3	No Floats
ST	Upgraded Enclosure (Stainless Steel)

*Additional cord length greater than 20': Specify after C. Example: (TRD-T31-C50) Indicates 50' cord lengths for all floats.

Note: Example when adding options to the TRD panel: TRD-T31-PX-ST

Typical Installation of Trident™ Duplex Control Panel

