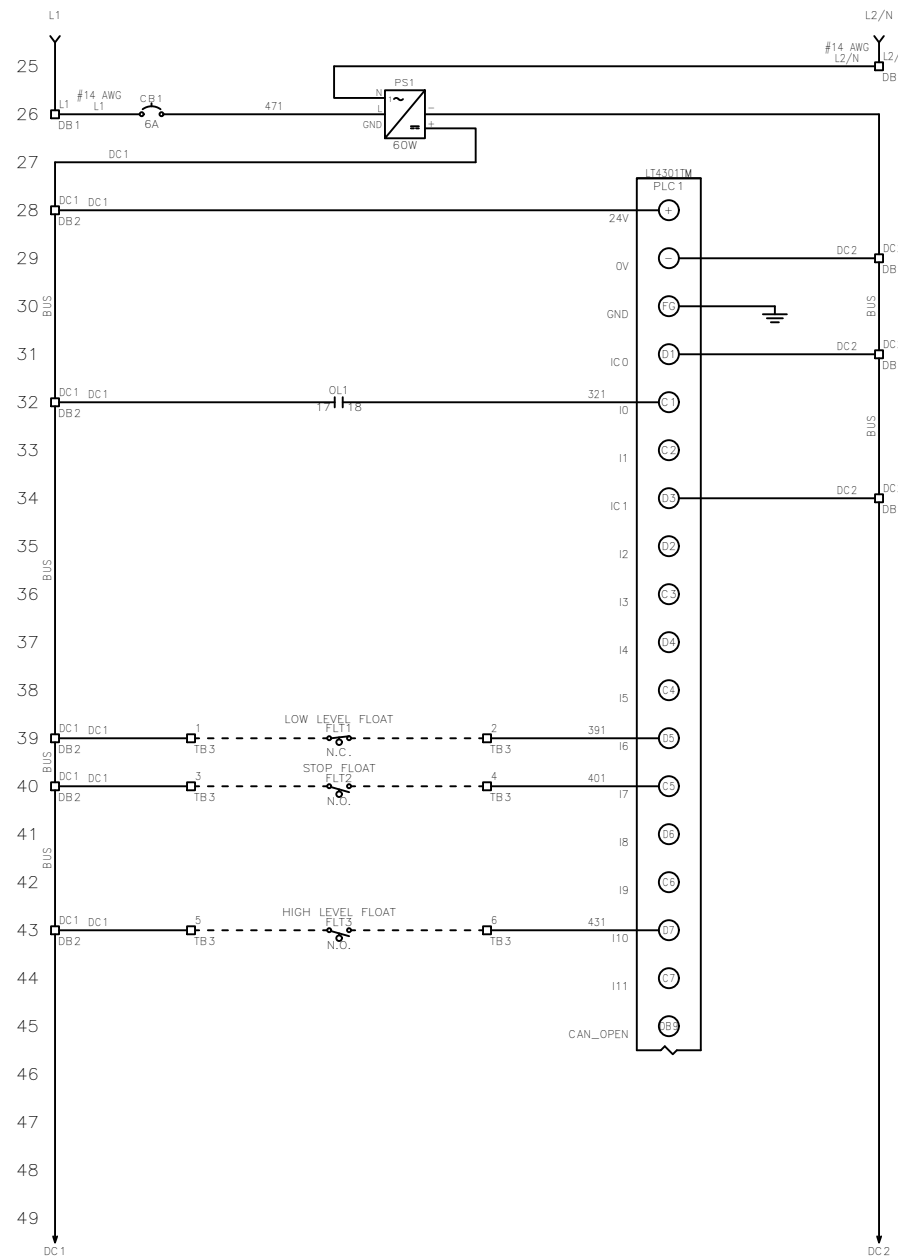
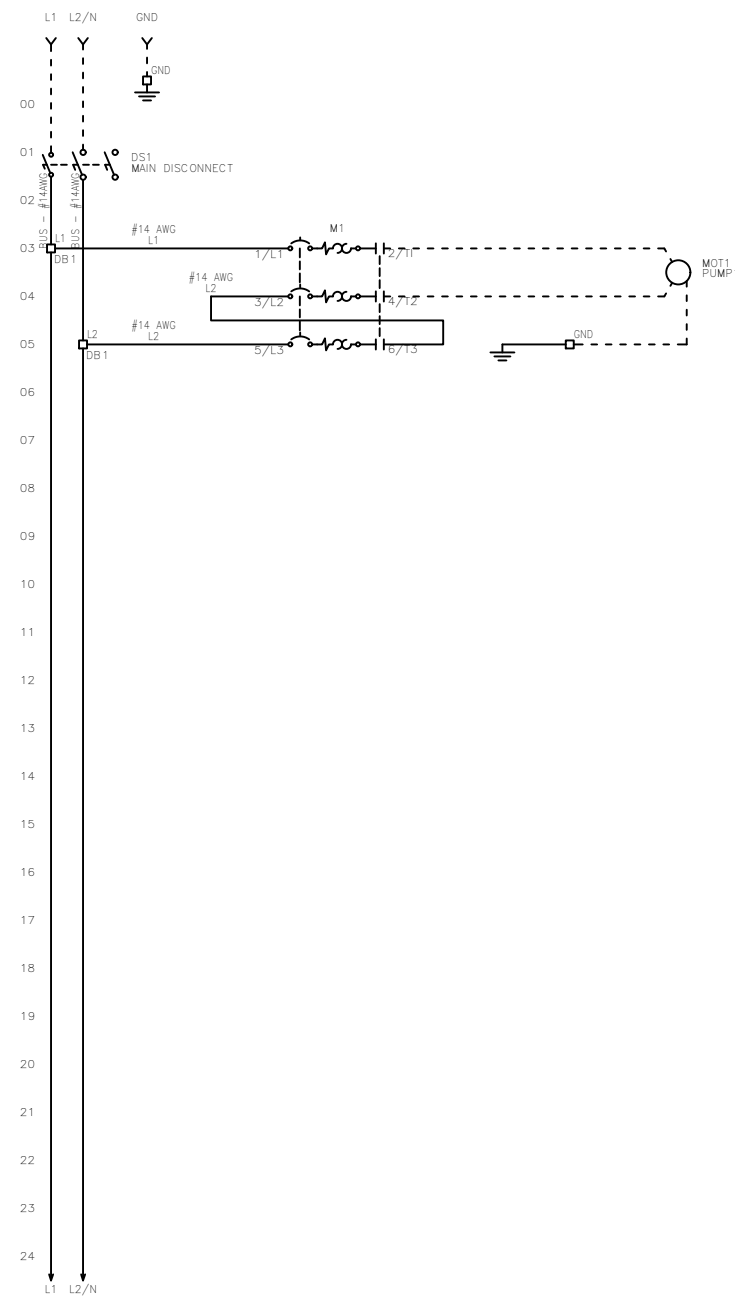


FNAME: HTRS-11-X

REVDATE: 0420

REVISIONS				
ZONE	REV	DESCRIPTION	DATE	APPROVED



----- DASHED LINE INDICATES FIELD WIRING.

USE COPPER CONDUCTORS ONLY.

TEMPERATURE RATING OF CONDUCTORS IS TO BE:
60°C (140°F) FOR UNDER 100A.
75°C (167°F) FOR OVER 100A.

BRANCH CIRCUIT PROTECTION SHALL BE PROVIDED BY THE INSTALLER: MUST BE SIZED ACCORDING TO PUMP/MOTOR MANUFACTURING SPECIFICATIONS.

VERIFY CORRECT OPERATION OF CONTROL PANEL AFTER INSTALLATION IS COMPLETE.

FIELD WIRING TORQUE SPECS.		UL #:	DRAWN BY:	DATE:
TERMINAL BLOCK UT 2,5	5 IN-LB	E320866	AO	4/13/20
TERMINAL BLOCK UT 4	7 IN-LB	TOTAL FLA:	APPROVED BY:	DATE:
TERMINAL BLOCK UT 6	15 IN-LB	7 A	KM	4/13/20
TERMINAL BLOCK UT 10	15 IN-LB	LARGEST MOT. FLA	THIS DRAWING CONTAINS PROPRIETARY INFORMATION AND SHALL NOT BE USED OR DISCLOSED WITHOUT PRIOR WRITTEN AUTHORIZATION.	
TERMINAL BLOCK UT 16	25 IN-LB	5.0 A		
TERMINAL BLOCK UT 35	30 IN-LB	VOLTAGE:		
TS1, TS2, J2 & J3 PCB	5 IN-LB	120/208/240 VAC		
TRANSFORMER H1F, H2F & H3F	15 IN-LB	PHASE:		
TRANSFORMER H1, H2 & H3	10 IN-LB	1 PH		
DS1 VLS3P63-125 R1	45 IN-LB	FREQUENCY:		
DS1 LK4JU3CN 100A	36 IN-LB	60 Hz		
DS1 LK4MU3N 200A	200 IN-LB	ENCLOSURE TYPE:		
M1/ M2 T1, T2 & T3	15 IN-LB	NEMA 3R		
		SHORT CIRCUIT CURRENT:		
		5KA RMS SYMMETRICAL		
		600V MAXIMUM		

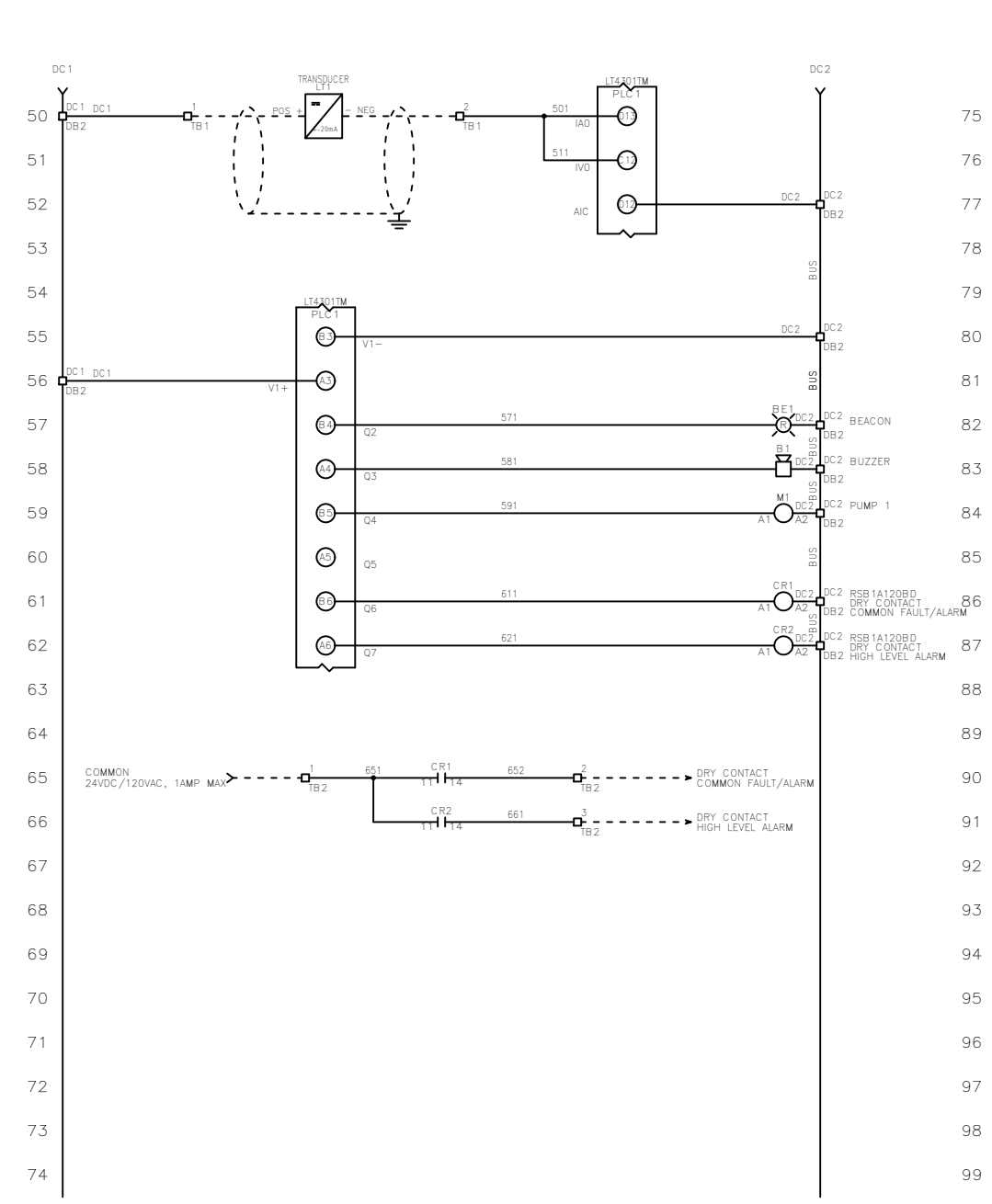


TITLE: HTRS-11-X CONTROL SCHEMATIC				
SIZE	DWG NO.	PART NO.	REV	
B	1564	HTRS-11-X		
SCALE	NONE	SHEET	1 OF 2	

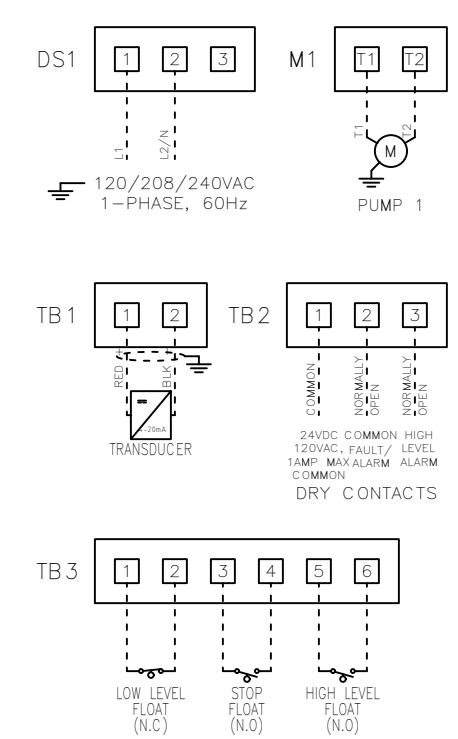
FNAME: HTRS-11-X

REVDATE: 0420

REVISIONS				
ZONE	REV	DESCRIPTION	DATE	APPROVED



FIELD WIRING CONNECTIONS



----- DASHED LINE INDICATES FIELD WIRING.

USE COPPER CONDUCTORS ONLY.

TEMPERATURE RATING OF CONDUCTORS IS TO BE:
 60°C (140°F) FOR UNDER 100A.
 75°C (167°F) FOR OVER 100A.

BRANCH CIRCUIT PROTECTION SHALL BE PROVIDED BY THE INSTALLER: MUST BE SIZED ACCORDING TO PUMP/MOTOR MANUFACTURING SPECIFICATIONS.

VERIFY CORRECT OPERATION OF CONTROL PANEL AFTER INSTALLATION IS COMPLETE.

FIELD WIRING TORQUE SPECS.		UL #:
TERMINAL BLOCK UT 2,5	5 IN-LB	E320866
TERMINAL BLOCK UT 4	7 IN-LB	
TERMINAL BLOCK UT 6	15 IN-LB	TOTAL FLA:
TERMINAL BLOCK UT 10	15 IN-LB	7 A
TERMINAL BLOCK UT 16	25 IN-LB	LARGEST MOT. FLA
TERMINAL BLOCK UT 35	30 IN-LB	5.0 A
TS1, TS2, J2 & J3 PCB	5 IN-LB	VOLTAGE:
TRANSFORMER H1F, H2F & H3F	15 IN-LB	120/208/240 VAC
TRANSFORMER H1, H2 & H3	10 IN-LB	PHASE:
DS1 VLS3P63-125 R1	45 IN-LB	1 PH
DS1 LK4JU3CN 100A	36 IN-LB	FREQUENCY:
DS1 LK4MU3N 200A	200 IN-LB	60 Hz
M1/ M2 T1, T2 & T3	15 IN-LB	ENCLOSURE TYPE:
		NEMA 3R
		SHORT CIRCUIT CURRENT:
		5KA RMS SYMMETRICAL
		600V MAXIMUM

DRAWN BY: AO
 DATE: 4/13/20

APPROVED BY: KM
 DATE: 4/13/20

THIS DRAWING CONTAINS PROPRIETARY INFORMATION AND SHALL NOT BE USED OR DISCLOSED WITHOUT PRIOR WRITTEN AUTHORIZATION.



TITLE: HTRS-11-X CONTROL SCHEMATIC			
SIZE: B	DWG NO.: 1564	PART NO.: HTRS-11-X	REV: 2 OF 2
SCALE: NONE		SHEET: 2 OF 2	