

OIL SMART® SIMPLEX PANELS

The Oil Smart® Simplex Panel, when combined with a manual sump pump, will automatically pump water without the risk of pumping oil into the environment. Additionally, the system alerts maintenance or building personnel in the event of a high oil or high water condition. Installation of the Simplex Panel allows you to comply with Elevator Code ASME A17.1 and State/Federal regulations while reducing the risk of adverse publicity, fines and expensive cleanup costs.

Models:

OSSIM-30

120/208/240 VAC Single Phase, operates pumps up to 1HP @ 120V, 3HP @ 208/240V

OSSIM-30-CB (Includes Pump Circuit Breaker)

120/208/240 VAC Single Phase, operates pumps up to 1HP @ 120V, 3HP @ 208/240V

OSSIM-30-E

230 VAC European, 50Hz, Single Phase, operates pumps up to 1 HP @ 230V

OSSIM-30-CB-E (Includes Pump Circuit Breaker)

230 VAC European, 50Hz, Single Phase, operates pumps up to 1 HP @ 230V

Features:

- UL Listed for the United States and Canada (Panel and Controls)
- Pump Control and High Liquid Alarm differentiate between oil and water; Includes Oil Smart® Pump Control and Liquid Smart® Alarm Switch; 20' Cords Included
- Pump Control Visible Indicators: Pump #1 Hand-Off-Auto (H.O.A.) Switch, Green Pump Run Light and Power On Light
- Alarm Visible Indicators: High Red Beacon Alarm Light Yellow Light for Oil, White Light for Water, Alarm Test and Silence Buttons
- High 85 Decibel Audible Alarm
- Complete Panel Remote Monitoring Dry Contacts: Oil, Water, High Liquid



Applications:

- Elevator Sumps
- Transformer Containment Areas
- Underground Vaults
- Any application where there is a need to remove water while containing oil



www.seewaterinc.com
or www.oilsmart.org

951.487.8073 • 888.733.9283
Email: info@seewaterinc.com

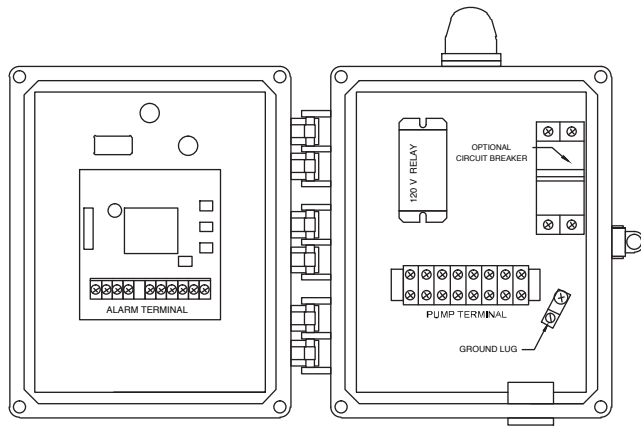
121 North Dillon Street • San Jacinto, CA 92583
P.O. Box 1269 • San Jacinto, CA 92581

Fail-Safe Technology since 1995.

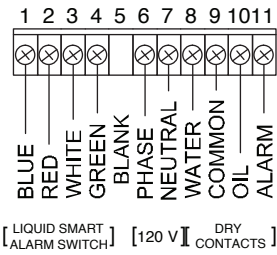


OIL SMART® SIMPLEX PANELS

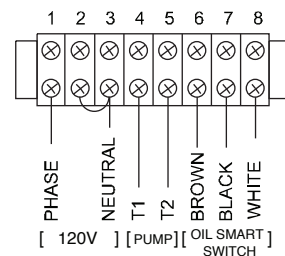
OSSIM-30 PANEL INSIDE VIEW



ALARM TERMINAL



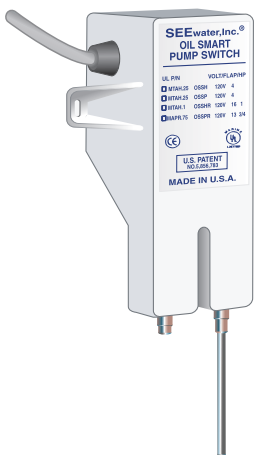
PUMP TERMINAL



*for 240V, remove jumper

OPERATION:

Oil Smart® Water Pump Switch

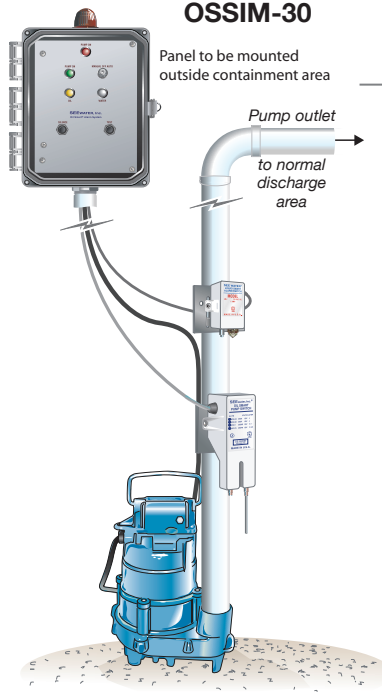


When water comes in contact with the short (on) sensor, the pump will turn on; The pump will remain on until water clears the long (off) sensor. If oil comes in contact with the on sensor, the pump will not turn on; however the pump switch will activate and pump water from under the oil. Oil does not harm

the system in anyway. The sensors can oscillate through oil and see water.

OSSIM-30

Panel to be mounted outside containment area



Liquid Smart® Alarm Sensor

If a liquid comes in contact with the sensors of the Liquid Smart Alarm Sensor, the sensor will send a signal to the control panel that there is a high liquid present. Simultaneously, the alarm sensor will differentiate and indicate if oil or water is present.

Technical Specifications:

- Panel Enclosure: NEMA 4X Polycarbonate, 6" X 6" X 4"
- Liquid Smart Enclosure: Type 3R High Impact Injected Plastic, 3.5"H x 1.5"W x 1.5"D
- Liquid Smart Voltage: 12VDC Liquid Smart Wire: Insulation-PVC, PE with nylon rip cord, 18AWG, UL Listed
- Liquid Smart Technology: Combination capacitive/optic, solid-state low amp circuit

Custom Options:

- Additional Component Cord Length
- Main Disconnect Switch
- Elapsed Time Meter
- Pump Run Dry Contact
- Cycle Counter
- Wireless Communication

Fail-Safe Technology since 1995.

www.seewaterinc.com or www.oilsmart.org

951.487.8073 • 888.733.9283 • Email: info@seewaterinc.com

121 North Dillon Street • San Jacinto, CA 92583

P.O. Box 1269 • San Jacinto, CA 92581

SEE WATER
Inc.
"OIL SMART" Water Pump Switches