



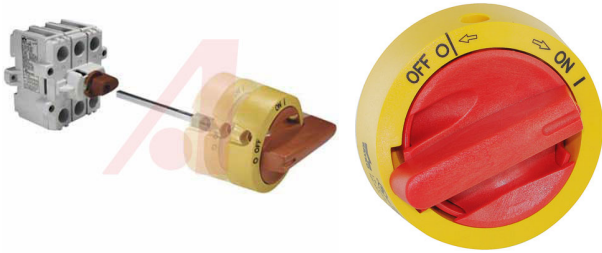
**SEEWATER** Inc.   
"OIL SMART" Water Pump Switches

CUSTOM CONTROL PANELS

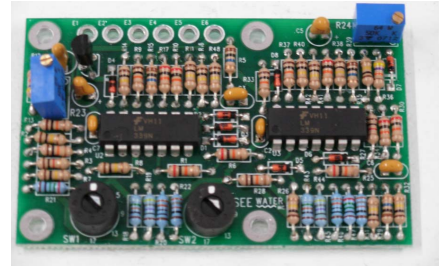
## CUSTOM CONTROL PANEL SYSTEMS

---

See Water, Inc. designs and manufacturers custom control panels to meet your specific requirements. Simply choose a Control Panel and build it the way you want it. Below are a few of the custom features that we offer with our control panels.



Main Disconnect Switch



Overload Protection



Cycle Counter



Elapsed Time Meter



Secondary Surge Arrestors

Other Custom Control Panels Available Features:

Custom Cord Lengths, Enclosure Type Options, Communication Options,  
Multiple Alarms

All panels are manufactured for 50/60Hz frequencies. Voltages are listed as US Voltages, but also work in conjunction with EU standards. All Panels are CSA Certified.



# CUSTOM CONTROL PANEL SYSTEMS

## Oil Smart Simplex Single Phase Custom Panel Order Sheet 120/208/240V

### Pump Information

|                   |  |
|-------------------|--|
| Pump Manufacturer |  |
| Pump Model #      |  |
| Pump HP           |  |
| Pump FLA          |  |

| Panel Information   |                             |                      |       |
|---|-----------------------------|----------------------|-------|
|   | Model #                     | List Price           | Order |
|   | <b>OSSIM-30</b>             | <b>\$ 1,257.00</b>   |       |
| <b>Standard Enclosure Type</b>  |                             |                      |       |
| Polycarbonate NEMA 4X   |                             | Included             |       |
| <b>Optional Enclosure Type</b>  |                             |                      |       |
| Stainless Steel Type 304  | Request Quote               |                      |       |
| Metal, NEMA 1 (Indoor)  | Request Quote               |                      |       |
| <b>Standard Ratings</b>   |                             |                      |       |
| HP Range 120V at 0-1HP or 208/240V at 0-3HP   |                             | Included             |       |
| <b>Optional Ratings</b>   |                             |                      |       |
| HP Range 120V at 0-2HP or 208/240V at 0-5HP   |                             | \$ 150.00            |       |
| <b>Standard Features</b>  |                             |                      |       |
| Green Pump Run Light  |                             | Included             |       |
| HOA Switch  |                             | Included             |       |
| Yellow Oil Light  |                             | Included             |       |
| White Water Light   |                             | Included             |       |
| Red Beacon Alarm Light  |                             | Included             |       |
| Dry Contacts Oil, Water, High Liquid  |                             | Included             |       |
| Power On Light  |                             | Included             |       |
| Lockable Latches  |                             | Included             |       |
| Also includes motor relay, circuit fuse, grounding lug, wiring schematics, and wire terminal strips |                             |                      |       |
| <b>Optional Features</b>  |                             |                      |       |
| Longer Cord Lengths on Components   | Specify Cord Lengths: _____ | \$1.00/ft./component |       |
| 20 Amp Circuit Breaker for Pump Protection  |                             | \$ 100.00            |       |
| Pump Run Dry Contact  |                             | \$ 127.00            |       |
| Cycle Counter with Reset  |                             | \$ 150.00            |       |
| Elapsed Time Meter with Reset   |                             | \$ 150.00            |       |
| Flasher   |                             | \$ 200.00            |       |
| Secondary Surge Arrestor  |                             | \$ 250.00            |       |
| Anti Condensation Heater  |                             | \$ 300.00            |       |

|                     |  |
|---------------------|--|
| Total Retail Amount |  |
| Discount            |  |
| Total               |  |

# CUSTOM CONTROL PANEL SYSTEMS

## Oil Smart Simplex Single Phase Custom Panel Order Sheet 120/208/240V

### Pump Information

|                   |  |
|-------------------|--|
| Pump Manufacturer |  |
| Pump Model #      |  |
| Pump HP           |  |
| Pump FLA          |  |

| Panel Information  |   |                      |       |
|--|---|----------------------|-------|
|  | Model #                                 | List Price           | Order |
|  | <b>OSSIM-TP-1</b>                       | <b>\$ 1,592.00</b>   |       |
| <b>Standard Enclosure Type</b>   |   |                      |       |
| Polycarbonate NEMA 4X  |   | Included             |       |
| <b>Optional Enclosure Type</b>   |   |                      |       |
| Stainless Steel Type 304   | Request Quote                           |                      |       |
| Metal, NEMA 1 (Indoor)   | Request Quote                           |                      |       |
| <b>Standard Ratings</b>  |   |                      |       |
| HP Range 120V at 0-.75HP or 208/240V at 0-2HP  |   | Included             |       |
| <b>Optional Ratings</b>  |   |                      |       |
| HP Range 120V at 0-2HP or 208/240V at 0-5HP  |   | \$ 150.00            |       |
| <b>Standard Features</b>   |   |                      |       |
| Green Pump Run Light   |   | Included             |       |
| HOA Switch   |   | Included             |       |
| Red Pump Fault Light   |   | Included             |       |
| Yellow Oil Light   |   | Included             |       |
| White Water Light  |   | Included             |       |
| Red Beacon Alarm Light   |   | Included             |       |
| Dry Contacts Oil, Water, High Liquid   |   | Included             |       |
| Pump Faults Indicator Terminal and Dry Contact   |   | Included             |       |
| Power On Light   |   | Included             |       |
| Lockable Latches   |   | Included             |       |
| Also includes motor relay, circuit breaker, circuit fuse, grounding lug, wiring schematics, and wire terminal strips |   |                      |       |
| <b>Optional Features</b>   |   |                      |       |
| Dial-An-Amp Pump Overload Lockout  | Specify Lockout Amps ___3-17 or ___8-20 | \$ 220.00            |       |
| Longer Cord Lengths on Components  | Specify Cord Lengths: _____             | \$1.00/ft./component |       |
| Pump Run Dry Contact   |   | \$ 127.00            |       |
| Cycle Counter with Reset   |   | \$ 150.00            |       |
| Elapsed Time Meter with Reset  |   | \$ 150.00            |       |
| Flasher  |   | \$ 200.00            |       |
| Secondary Surge Arrestor   |   | \$ 250.00            |       |
| Anti Condensation Heater   |   | \$ 300.00            |       |

|                     |  |
|---------------------|--|
| Total Retail Amount |  |
| Discount            |  |
| Total               |  |

# CUSTOM CONTROL PANEL SYSTEMS

## Oil Smart Simplex Three Phase Custom Panel Order Sheet 208/240V

### Pump Information

|                   |  |
|-------------------|--|
| Pump Manufacturer |  |
| Pump Model #      |  |
| Pump HP           |  |
| Pump FLA          |  |

| Panel Information  |   |                      |       |
|--|---|----------------------|-------|
|  | Model #                                 | List Price           | Order |
|  | <b>OSSIM-TP-3</b>                       | <b>\$ 1,731.00</b>   |       |
| <b>Standard Enclosure Type</b>   |   |                      |       |
| Polycarbonate NEMA 4X  |   | Included             |       |
| <b>Optional Enclosure Type</b>   |   |                      |       |
| Stainless Steel Type 304   | Request Quote                           |                      |       |
| Metal, NEMA 1 (Indoor)   | Request Quote                           |                      |       |
| <b>Standard Ratings</b>  |   |                      |       |
| 208/240V at 0-3HP  |   | Included             |       |
| <b>Optional Ratings</b>  |   |                      |       |
| 208/240V at 0-5HP  |   | \$ 150.00            |       |
| <b>Standard Features</b>   |   |                      |       |
| Green Pump Run Light   |   | Included             |       |
| HOA Switch   |   | Included             |       |
| Red Pump Fault Light   |   | Included             |       |
| Yellow Oil Light   |   | Included             |       |
| White Water Light  |   | Included             |       |
| Red Beacon Alarm Light   |   | Included             |       |
| Dry Contacts Oil, Water, High Liquid   |   | Included             |       |
| Pump Faults Indicator Terminal and Dry Contact   |   | Included             |       |
| Power On Light   |   | Included             |       |
| Lockable Latches   |   | Included             |       |
| Also includes motor relay, circuit breaker, circuit fuse, grounding lug, wiring schematics, and wire terminal strips |   |                      |       |
| <b>Optional Features</b>   |   |                      |       |
| Dial-An-Amp Pump Overload Lockout  | Specify Lockout Amps ___3-17 or ___8-20 | \$ 220.00            |       |
| Longer Cord Lengths on Components  | Specify Cord Lengths: _____             | \$1.00/ft./component |       |
| Pump Run Dry Contact   |   | \$ 127.00            |       |
| Cycle Counter with Reset   |   | \$ 150.00            |       |
| Elapsed Time Meter with Reset  |   | \$ 150.00            |       |
| Flasher  |   | \$ 200.00            |       |
| Secondary Surge Arrestor   |   | \$ 250.00            |       |
| Anti Condensation Heater   |   | \$ 300.00            |       |

|                     |  |
|---------------------|--|
| Total Retail Amount |  |
| Discount            |  |
| Total               |  |

# CUSTOM CONTROL PANEL SYSTEMS

## Oil Smart Simplex Three Phase Custom Panel Order Sheet 480V

### Pump Information

|                   |  |
|-------------------|--|
| Pump Manufacturer |  |
| Pump Model #      |  |
| Pump HP           |  |
| Pump FLA          |  |

| Panel Information  |   |                      |       |
|--|---|----------------------|-------|
|  | Model #                                 | List Price           | Order |
|  | <b>OSSIM-TP-3-B</b>                     | <b>\$ 1,973.00</b>   |       |
| <b>Standard Enclosure Type</b>   |   |                      |       |
| Polycarbonate NEMA 4X  |   | Included             |       |
| <b>Optional Enclosure Type</b>   |   |                      |       |
| Stainless Steel Type 304   | Request Quote                           |                      |       |
| Metal, NEMA 1 (Indoor)   | Request Quote                           |                      |       |
| <b>Standard Ratings</b>  |   |                      |       |
| HP Range 480V at 0-5HP   |   | Included             |       |
| <b>Optional Ratings</b>  |   |                      |       |
| HP Range 480V at 0-10HP  |   | \$ 150.00            |       |
| <b>Standard Features</b>   |   |                      |       |
| Green Pump Run Light   |   | Included             |       |
| HOA Switch   |   | Included             |       |
| Red Pump Fault Light   |   | Included             |       |
| Yellow Oil Light   |   | Included             |       |
| White Water Light  |   | Included             |       |
| Red Beacon Alarm Light   |   | Included             |       |
| Dry Contacts Oil, Water, High Liquid   |   | Included             |       |
| Pump Faults Indicator Terminal and Dry Contact   |   | Included             |       |
| Power On Light   |   | Included             |       |
| Lockable Latches   |   | Included             |       |
| Also includes motor relay, circuit breaker, circuit fuse, grounding lug, wiring schematics, and wire terminal strips |   |                      |       |
| <b>Optional Features</b>   |   |                      |       |
| <b>Main Disconnect (Recommended)</b>   |   | \$ 300.00            |       |
| Dial-An-Amp Pump Overload Lockout  | Specify Lockout Amps ___3-17 or ___8-20 | \$ 220.00            |       |
| Longer Cord Lengths on Components  | Specify Cord Lengths:_____              | \$1.00/ft./component |       |
| Pump Run Dry Contact   |   | \$ 127.00            |       |
| Cycle Counter with Reset   |   | \$ 150.00            |       |
| Elapsed Time Meter with Reset  |   | \$ 150.00            |       |
| Flasher  |   | \$ 200.00            |       |
| Secondary Surge Arrestor   |   | \$ 250.00            |       |
| Anti Condensation Heater   |   | \$ 300.00            |       |

|                     |  |
|---------------------|--|
| Total Retail Amount |  |
| Discount            |  |
| Total               |  |

# CUSTOM CONTROL PANEL SYSTEMS

## Oil Smart Duplex Single Phase Custom Panel Order Sheet 120/208/240V

### Pump Information

|                   |  |
|-------------------|--|
| Pump Manufacturer |  |
| Pump Model #      |  |
| Pump HP           |  |
| Pump FLA          |  |

| Panel Information  |   |                      |       |
|--|---|----------------------|-------|
|  | Model #                                 | List Price           | Order |
|  | <b>OSSD1P-3</b>                         | <b>\$ 1,778.00</b>   |       |
| <b>Standard Enclosure Type</b>   |   |                      |       |
| Polycarbonate NEMA 4X  |   | Included             |       |
| <b>Optional Enclosure Type</b>   |   |                      |       |
| Stainless Steel Type 304   | Request Quote                           |                      |       |
| Metal, NEMA 1 (Indoor)   | Request Quote                           |                      |       |
| <b>Standard Ratings</b>  |   |                      |       |
| HP Range 120V at 0-.75HP or 208/240V at 0-2HP  |   | Included             |       |
| <b>Optional Ratings</b>  |   |                      |       |
| HP Range 120V at 0-2HP or 208/240V at 0-5HP  |   | \$ 150.00            |       |
| <b>Standard Features</b>   |   |                      |       |
| Green Pump Run Lights  |   | Included             |       |
| HOA Switches   |   | Included             |       |
| Red Pump Fault Lights  |   | Included             |       |
| Yellow Oil Light   |   | Included             |       |
| White Water Light  |   | Included             |       |
| Red Beacon Alarm Light   |   | Included             |       |
| Dry Contacts Oil, Water, High Liquid   |   | Included             |       |
| Pump Faults Indicator Terminal and Dry Contact   |   | Included             |       |
| Power On Light   |   | Included             |       |
| Lockable Latches   |   | Included             |       |
| Also includes motor relays, circuit breakers, circuit fuse, grounding lug, wiring schematics, and wire terminal strips |   |                      |       |
| <b>Optional Features</b>   |   |                      |       |
| Dial-An-Amp Pump Overload Lockout  | Specify Lockout Amps ___3-17 or ___8-20 | \$ 220.00            |       |
| Longer Cord Lengths on Components  | Specify Cord Lengths: _____             | \$1.00/ft./component |       |
| Pump Run Dry Contact   |   | \$ 127.00            |       |
| Cycle Counter with Reset   |   | \$ 150.00            |       |
| Elapsed Time Meter with Reset  |   | \$ 150.00            |       |
| Flasher  |   | \$ 200.00            |       |
| Secondary Surge Arrestor   |   | \$ 250.00            |       |
| Anti Condensation Heater   |   | \$ 300.00            |       |

|                     |  |
|---------------------|--|
| Total Retail Amount |  |
| Discount            |  |
| Total               |  |

# CUSTOM CONTROL PANEL SYSTEMS

## Oil Smart Duplex Three Phase Custom Panel Order Sheet 208/240V

### Pump Information

|                   |  |
|-------------------|--|
| Pump Manufacturer |  |
| Pump Model #      |  |
| Pump HP           |  |
| Pump FLA          |  |

| Panel Information  |   |                      |       |
|--|---|----------------------|-------|
|  | Model #                                 | List Price           | Order |
|  | <b>OSSD3P-5</b>                         | <b>\$ 2,148.00</b>   |       |
| <b>Standard Enclosure Type</b>   |   |                      |       |
| Polycarbonate NEMA 4X  |   | Included             |       |
| <b>Optional Enclosure Type</b>   |   |                      |       |
| Stainless Steel Type 304   | Request Quote                           |                      |       |
| Metal, NEMA 1 (Indoor)   | Request Quote                           |                      |       |
| <b>Standard Ratings</b>  |   |                      |       |
| HP Range 208/240V at 0-3HP   |   | Included             |       |
| <b>Optional Ratings</b>  |   |                      |       |
| HP Range 208/240V at 0-5HP   |   | \$ 150.00            |       |
| <b>Standard Features</b>   |   |                      |       |
| Green Pump Run Lights  |   | Included             |       |
| HOA Switches   |   | Included             |       |
| Red Pump Fault Lights  |   | Included             |       |
| Yellow Oil Light   |   | Included             |       |
| White Water Light  |   | Included             |       |
| Red Beacon Alarm Light   |   | Included             |       |
| Dry Contacts Oil, Water, High Liquid   |   | Included             |       |
| Pump Faults Indicator Terminal and Dry Contact   |   | Included             |       |
| Power On Light   |   | Included             |       |
| Lockable Latches   |   | Included             |       |
| Also includes motor relays, circuit breakers, circuit fuse, grounding lug, wiring schematics, and wire terminal strips |   |                      |       |
| <b>Optional Features</b>   |   |                      |       |
| Dial-An-Amp Pump Overload Lockout  | Specify Lockout Amps ___3-17 or ___8-20 | \$ 220.00            |       |
| Longer Cord Lengths on Components  | Specify Cord Lengths: _____             | \$1.00/ft./component |       |
| Pump Run Dry Contact   |   | \$ 127.00            |       |
| Cycle Counter with Reset   |   | \$ 150.00            |       |
| Elapsed Time Meter with Reset  |   | \$ 150.00            |       |
| Flasher  |   | \$ 200.00            |       |
| Secondary Surge Arrestor   |   | \$ 250.00            |       |
| Anti Condensation Heater   |   | \$ 300.00            |       |

|                     |  |
|---------------------|--|
| Total Retail Amount |  |
| Discount            |  |
| Total               |  |

# CUSTOM CONTROL PANEL SYSTEMS

## Oil Smart Duplex Three Phase Custom Panel Order Sheet 480V

### Pump Information

|                   |       |
|-------------------|-------|
| Pump Manufacturer | _____ |
| Pump Model #      | _____ |
| Pump HP           | _____ |
| Pump FLA          | _____ |

| Panel Information  |   |                      |                          |
|--|---|----------------------|--------------------------|
|  | Model #                                 | List Price           | Order                    |
|  | <b>OSSD3P-10</b>                        | <b>\$ 2,390.00</b>   |                          |
| <b>Standard Enclosure Type</b>   |   |                      |                          |
| Polycarbonate NEMA 4X  |   | Included             |                          |
| <b>Optional Enclosure Type</b>   |   |                      |                          |
| Stainless Steel Type 304   | Request Quote                           |                      | <input type="checkbox"/> |
| Metal, NEMA 1 (Indoor)   | Request Quote                           |                      | <input type="checkbox"/> |
| <b>Standard Ratings</b>  |   |                      |                          |
| HP Range 480V at 0-5HP   |   | Included             |                          |
| <b>Optional Ratings</b>  |   |                      |                          |
| HP Range 480V at 0-10HP  |   | \$ 150.00            | <input type="checkbox"/> |
| <b>Standard Features</b>   |   |                      |                          |
| Green Pump Run Lights  |   | Included             |                          |
| HOA Switches   |   | Included             |                          |
| Red Pump Fault Lights  |   | Included             |                          |
| Yellow Oil Light   |   | Included             |                          |
| White Water Light  |   | Included             |                          |
| Red Beacon Alarm Light   |   | Included             |                          |
| Dry Contacts Oil, Water, High Liquid   |   | Included             |                          |
| Pump Faults Indicator Terminal and Dry Contact   |   | Included             |                          |
| Power On Light   |   | Included             |                          |
| Lockable Latches   |   | Included             |                          |
| Also includes motor relays, circuit breakers, circuit fuse, grounding lug, wiring schematics, and wire terminal strips |   |                      |                          |
| <b>Optional Features</b>   |   |                      |                          |
| <b>Main Disconnect (Recommended)</b>   |   | \$ 300.00            | <input type="checkbox"/> |
| Dial-An-Amp Pump Overload Lockout  | Specify Lockout Amps ___3-17 or ___8-20 | \$ 220.00            | <input type="checkbox"/> |
| Longer Cord Lengths on Components  | Specify Cord Lengths:_____              | \$1.00/ft./component | <input type="checkbox"/> |
| Pump Run Dry Contact   |   | \$ 127.00            | <input type="checkbox"/> |
| Cycle Counter with Reset   |   | \$ 150.00            | <input type="checkbox"/> |
| Elapsed Time Meter with Reset  |   | \$ 150.00            | <input type="checkbox"/> |
| Flasher  |   | \$ 200.00            | <input type="checkbox"/> |
| Secondary Surge Arrestor   |   | \$ 250.00            | <input type="checkbox"/> |
| Anti Condensation Heater   |   | \$ 300.00            | <input type="checkbox"/> |

|                     |  |                      |
|---------------------|--|----------------------|
| Total Retail Amount |  | <input type="text"/> |
| Discount            |  | <input type="text"/> |
| Total               |  | <input type="text"/> |

# CUSTOM CONTROL PANEL SYSTEMS

## Wastewater Simplex Single Phase Custom Panel Order Sheet 120/208/240V

### Pump Information

|                   |  |
|-------------------|--|
| Pump Manufacturer |  |
| Pump Model #      |  |
| Pump HP           |  |
| Pump FLA          |  |

| Panel Information  |   |                      |       |
|--|---|----------------------|-------|
|  | Model #                                 | List Price           | Order |
|  | <b>WS1P-TP</b>                          | <b>\$ 866.00</b>     |       |
| <b>Standard Enclosure Type</b>   |   |                      |       |
| Polycarbonate NEMA 4X  |   | Included             |       |
| <b>Optional Enclosure Type</b>   |   |                      |       |
| Stainless Steel Type 304   | Request Quote                           |                      |       |
| Metal, NEMA 1 (Indoor)   | Request Quote                           |                      |       |
| <b>Standard Ratings</b>  |   |                      |       |
| HP Range 120V at 0-.75HP or 208/240V at 0-2HP  |   | Included             |       |
| <b>Optional Ratings</b>  |   |                      |       |
| HP Range 120V at 0-2HP or 208/240V at 0-5HP  |   | \$ 150.00            |       |
| <b>Standard Features</b>   |   |                      |       |
| Green Pump Run Light   |   | Included             |       |
| HOA Switch   |   | Included             |       |
| Red Pump Fault Light   |   | Included             |       |
| Red Beacon Alarm Light   |   | Included             |       |
| Dry Contact High Liquid  |   | Included             |       |
| Pump Faults Indicator Terminal and Dry Contact   |   | Included             |       |
| Power On Light   |   | Included             |       |
| Lockable Latches   |   | Included             |       |
| Also includes motor relay, circuit breaker, circuit fuse, grounding lug, wiring schematics, and wire terminal strips |   |                      |       |
| <b>Optional Features</b>   |   |                      |       |
| Dial-An-Amp Pump Overload Lockout  | Specify Lockout Amps ___3-17 or ___8-20 | \$ 220.00            |       |
| Longer Cord Lengths on Components  | Specify Cord Lengths: _____             | \$1.00/ft./component |       |
| Pump Run Dry Contact   |   | \$ 127.00            |       |
| Cycle Counter with Reset   |   | \$ 150.00            |       |
| Elapsed Time Meter with Reset  |   | \$ 150.00            |       |
| Flasher  |   | \$ 200.00            |       |
| Secondary Surge Arrestor   |   | \$ 250.00            |       |
| Anti Condensation Heater   |   | \$ 300.00            |       |

|                     |  |
|---------------------|--|
| Total Retail Amount |  |
| Discount            |  |
| Total               |  |

# CUSTOM CONTROL PANEL SYSTEMS

## Wastewater Simplex Three Phase Custom Panel Order Sheet 208/240V

### Pump Information

|                   |  |
|-------------------|--|
| Pump Manufacturer |  |
| Pump Model #      |  |
| Pump HP           |  |
| Pump FLA          |  |

| Panel Information  |   |                      |       |
|--|---|----------------------|-------|
|  | Model #                                 | List Price           | Order |
|  | <b>WS3P-TP</b>                          | <b>\$ 1,160.00</b>   |       |
| <b>Standard Enclosure Type</b>   |   |                      |       |
| Polycarbonate NEMA 4X  |   | Included             |       |
| <b>Optional Enclosure Type</b>   |   |                      |       |
| Stainless Steel Type 304   | Request Quote                           |                      |       |
| Metal, NEMA 1 (Indoor)   | Request Quote                           |                      |       |
| <b>Standard Ratings</b>  |   |                      |       |
| 208/240V at 0-3HP  |   | Included             |       |
| <b>Optional Ratings</b>  |   |                      |       |
| 208/240V at 0-5HP  |   | \$ 150.00            |       |
| <b>Standard Features</b>   |   |                      |       |
| Green Pump Run Light   |   | Included             |       |
| HOA Switch   |   | Included             |       |
| Red Pump Fault Light   |   | Included             |       |
| Red Beacon Alarm Light   |   | Included             |       |
| Dry Contact High Liquid  |   | Included             |       |
| Pump Faults Indicator Terminal and Dry Contact   |   | Included             |       |
| Power On Light   |   | Included             |       |
| Lockable Latches   |   | Included             |       |
| Also includes motor relay, circuit breaker, circuit fuse, grounding lug, wiring schematics, and wire terminal strips |   |                      |       |
| <b>Optional Features</b>   |   |                      |       |
| Dial-An-Amp Pump Overload Lockout  | Specify Lockout Amps ___3-17 or ___8-20 | \$ 220.00            |       |
| Longer Cord Lengths on Components  | Specify Cord Lengths: _____             | \$1.00/ft./component |       |
| Pump Run Dry Contact   |   | \$ 127.00            |       |
| Cycle Counter with Reset   |   | \$ 150.00            |       |
| Elapsed Time Meter with Reset  |   | \$ 150.00            |       |
| Flasher  |   | \$ 200.00            |       |
| Secondary Surge Arrestor   |   | \$ 250.00            |       |
| Anti Condensation Heater   |   | \$ 300.00            |       |

|                     |  |
|---------------------|--|
| Total Retail Amount |  |
| Discount            |  |
| Total               |  |

# CUSTOM CONTROL PANEL SYSTEMS

## Wastewater Simplex Three Phase Custom Panel Order Sheet 480V

### Pump Information

|                   |  |
|-------------------|--|
| Pump Manufacturer |  |
| Pump Model #      |  |
| Pump HP           |  |
| Pump FLA          |  |

| Panel Information  |   |                      |       |
|--|---|----------------------|-------|
|  | Model #                                 | List Price           | Order |
|  | <b>WS3P-TP-B</b>                        | <b>\$ 1,469.00</b>   |       |
| <b>Standard Enclosure Type</b>   |   |                      |       |
| Polycarbonate NEMA 4X  |   | Included             |       |
| <b>Optional Enclosure Type</b>   |   |                      |       |
| Stainless Steel Type 304   | Request Quote                           |                      |       |
| Metal, NEMA 1 (Indoor)   | Request Quote                           |                      |       |
| <b>Standard Ratings</b>  |   |                      |       |
| HP Range 480V at 0-5HP   |   | Included             |       |
| <b>Optional Ratings</b>  |   |                      |       |
| HP Range 480V at 0-10HP  |   | \$ 150.00            |       |
| <b>Standard Features</b>   |   |                      |       |
| Green Pump Run Light   |   | Included             |       |
| HOA Switch   |   | Included             |       |
| Red Pump Fault Light   |   | Included             |       |
| Red Beacon Alarm Light   |   | Included             |       |
| Dry Contact High Liquid  |   | Included             |       |
| Pump Faults Indicator Terminal and Dry Contact   |   | Included             |       |
| Power On Light   |   | Included             |       |
| Lockable Latches   |   | Included             |       |
| Also includes motor relay, circuit breaker, circuit fuse, grounding lug, wiring schematics, and wire terminal strips |   |                      |       |
| <b>Optional Features</b>   |   |                      |       |
| <b>Main Disconnect (Recommended)</b>   |   | \$ 300.00            |       |
| Dial-An-Amp Pump Overload Lockout  | Specify Lockout Amps ___3-17 or ___8-20 | \$ 220.00            |       |
| Longer Cord Lengths on Components  | Specify Cord Lengths: _____             | \$1.00/ft./component |       |
| Pump Run Dry Contact   |   | \$ 127.00            |       |
| Cycle Counter with Reset   |   | \$ 150.00            |       |
| Elapsed Time Meter with Reset  |   | \$ 150.00            |       |
| Flasher  |   | \$ 200.00            |       |
| Secondary Surge Arrestor   |   | \$ 250.00            |       |
| Anti Condensation Heater   |   | \$ 300.00            |       |

|                     |  |
|---------------------|--|
| Total Retail Amount |  |
| Discount            |  |
| Total               |  |

# CUSTOM CONTROL PANEL SYSTEMS

## Wastewater Duplex Single Phase Custom Panel Order Sheet 120/208/240V

### Pump Information

|                   |  |
|-------------------|--|
| Pump Manufacturer |  |
| Pump Model #      |  |
| Pump HP           |  |
| Pump FLA          |  |

| Panel Information  |   |                      |       |
|--|---|----------------------|-------|
|  | Model #                                 | List Price           | Order |
|  | WD1P-4                                  | \$ 1,125.00          |       |
| <b>Standard Enclosure Type</b>   |   |                      |       |
| Polycarbonate NEMA 4X  |   | Included             |       |
| <b>Optional Enclosure Type</b>   |   |                      |       |
| Stainless Steel Type 304   | Request Quote                           |                      |       |
| Metal, NEMA 1 (Indoor)   | Request Quote                           |                      |       |
| <b>Standard Ratings</b>  |   |                      |       |
| HP Range 120V at 0-.75HP or 208/240V at 0-2HP  |   | Included             |       |
| <b>Optional Ratings</b>  |   |                      |       |
| HP Range 120V at 0-2HP or 208/240V at 0-5HP  |   | \$ 150.00            |       |
| <b>Standard Features</b>   |   |                      |       |
| Green Pump Run Lights  |   | Included             |       |
| HOA Switches   |   | Included             |       |
| Red Pump Fault Lights  |   | Included             |       |
| Red Beacon Alarm Light   |   | Included             |       |
| Dry Contact High Liquid  |   | Included             |       |
| Pump Faults Indicator Terminal and Dry Contact   |   | Included             |       |
| Power On Light   |   | Included             |       |
| Lockable Latches   |   | Included             |       |
| Also includes motor relays, circuit breakers, circuit fuse, grounding lug, wiring schematics, and wire terminal strips |   |                      |       |
| <b>Optional Features</b>   |   |                      |       |
| Minus 1 Float. 3rd float to be alarm and 2 pump demand   |   | \$ (20.00)           |       |
| Dial-An-Amp Pump Overload Lockout  | Specify Lockout Amps ___3-17 or ___8-20 | \$ 220.00            |       |
| Longer Cord Lengths on Components  | Specify Cord Lengths: _____             | \$1.00/ft./component |       |
| Pump Run Dry Contact   |   | \$ 127.00            |       |
| Cycle Counter with Reset   |   | \$ 150.00            |       |
| Elapsed Time Meter with Reset  |   | \$ 150.00            |       |
| Flasher  |   | \$ 200.00            |       |
| Secondary Surge Arrestor   |   | \$ 250.00            |       |
| Anti Condensation Heater   |   | \$ 300.00            |       |

|                     |  |
|---------------------|--|
| Total Retail Amount |  |
| Discount            |  |
| Total               |  |

# CUSTOM CONTROL PANEL SYSTEMS

## Wastewater Duplex Three Phase Custom Panel Order Sheet 208/240V

### Pump Information

|                   |  |
|-------------------|--|
| Pump Manufacturer |  |
| Pump Model #      |  |
| Pump HP           |  |
| Pump FLA          |  |

| Panel Information  |   |                      |       |
|--|---|----------------------|-------|
|  | Model #                                 | List Price           | Order |
|  | <b>WD3P-5-4</b>                         | <b>\$ 1,413.00</b>   |       |
| <b>Standard Enclosure Type</b>   |   |                      |       |
| Polycarbonate NEMA 4X  |   | Included             |       |
| <b>Optional Enclosure Type</b>   |   |                      |       |
| Stainless Steel Type 304   | Request Quote                           |                      |       |
| Metal, NEMA 1 (Indoor)   | Request Quote                           |                      |       |
| <b>Standard Ratings</b>  |   |                      |       |
| HP Range 208/240V at 0-3HP   |   | Included             |       |
| <b>Optional Ratings</b>  |   |                      |       |
| HP Range 208/240V at 0-5HP   |   | \$ 150.00            |       |
| <b>Standard Features</b>   |   |                      |       |
| Green Pump Run Lights  |   | Included             |       |
| HOA Switches   |   | Included             |       |
| Red Pump Fault Lights  |   | Included             |       |
| Red Beacon Alarm Light   |   | Included             |       |
| Dry Contact High Liquid  |   | Included             |       |
| Pump Faults Indicator Terminal and Dry Contact   |   | Included             |       |
| Power On Light   |   | Included             |       |
| Lockable Latches   |   | Included             |       |
| Also includes motor relays, circuit breakers, circuit fuse, grounding lug, wiring schematics, and wire terminal strips |   |                      |       |
| <b>Optional Features</b>   |   |                      |       |
| Minus 1 Float. 3rd float to be alarm and 2 pump demand   |   | \$ (20.00)           |       |
| Dial-An-Amp Pump Overload Lockout  | Specify Lockout Amps ___3-17 or ___8-20 | \$ 220.00            |       |
| Longer Cord Lengths on Components  | Specify Cord Lengths: _____             | \$1.00/ft./component |       |
| Pump Run Dry Contact   |   | \$ 127.00            |       |
| Cycle Counter with Reset   |   | \$ 150.00            |       |
| Elapsed Time Meter with Reset  |   | \$ 150.00            |       |
| Flasher  |   | \$ 200.00            |       |
| Secondary Surge Arrestor   |   | \$ 250.00            |       |
| Anti Condensation Heater   |   | \$ 300.00            |       |

|                     |  |  |
|---------------------|--|--|
| Total Retail Amount |  |  |
| Discount            |  |  |
| Total               |  |  |

# CUSTOM CONTROL PANEL SYSTEMS

## Wastewater Duplex Three Phase Custom Panel Order Sheet 480V

### Pump Information

|                   |  |
|-------------------|--|
| Pump Manufacturer |  |
| Pump Model #      |  |
| Pump HP           |  |
| Pump FLA          |  |

| Panel Information   |   |                      |       |
|---|---|----------------------|-------|
|   | Model #                                 | List Price           | Order |
|   | <b>WD3P-10-4</b>                        | <b>\$ 1,521.00</b>   |       |
| <b>Standard Enclosure Type</b>  |   |                      |       |
| Polycarbonate NEMA 4X   |   | Included             |       |
| <b>Optional Enclosure Type</b>  |   |                      |       |
| Stainless Steel Type 304  | Request Quote                           |                      |       |
| Metal, NEMA 1 (Indoor)  | Request Quote                           |                      |       |
| <b>Standard Ratings</b>   |   |                      |       |
| HP Range 480V at 0-5HP  |   | Included             |       |
| <b>Optional Ratings</b>   |   |                      |       |
| HP Range 480V at 0-10HP   |   | \$ 150.00            |       |
| <b>Standard Features</b>  |   |                      |       |
| Green Pump Run Lights   |   | Included             |       |
| HOA Switches  |   | Included             |       |
| Red Pump Fault Lights   |   | Included             |       |
| Red Beacon Alarm Light  |   | Included             |       |
| Dry Contact High Liquid   |   | Included             |       |
| Pump Faults Indicator Terminal and Dry Contact  |   | Included             |       |
| Power On Light  |   | Included             |       |
| Lockable Latches  |   | Included             |       |
| Includes motor relays, circuit breakers, circuit fuse, grounding lug, wiring schematics, and wire terminal strips |   |                      |       |
| <b>Optional Features</b>  |   |                      |       |
| <b>Main Disconnect (Recommended)</b>  |   | \$ 300.00            |       |
| Minus 1 Float. 3rd float to be alarm and 2 pump demand  |   | \$ (20.00)           |       |
| Dial-An-Amp Pump Overload Lockout   | Specify Lockout Amps ___3-17 or ___8-20 | \$ 220.00            |       |
| Longer Cord Lengths on Components   | Specify Cord Lengths: _____             | \$1.00/ft./component |       |
| Pump Run Dry Contact  |   | \$ 127.00            |       |
| Cycle Counter with Reset  |   | \$ 150.00            |       |
| Elapsed Time Meter with Reset   |   | \$ 150.00            |       |
| Flasher   |   | \$ 200.00            |       |
| Secondary Surge Arrestor  |   | \$ 250.00            |       |
| Anti Condensation Heater  |   | \$ 300.00            |       |

|                     |  |
|---------------------|--|
| Total Retail Amount |  |
| Discount            |  |
| Total               |  |

**CUSTOM CONTROL PANEL SYSTEMS**

**www.seewaterinc.com  
or www.oilsmart.org**

**951.487.8073 • 888.733.9283**

**Email: info@seewaterinc.com**

**121 North Dillon Street • San Jacinto, CA 92583**

**P.O. Box 1269 • San Jacinto, CA 92581**

**Fail-Safe Technology since 1995.**

