

HYDRO GENERATION OIL SMART® DISCONNECT PUMP CONTROLLER

OIL SMART® SWITCH AND PUMP INSTALLATION:

CAUTION: YOU MUST REMOVE ANY FLOAT SWITCH THAT IS CURRENTLY IN USE OR SUPPLIED BY PUMP MANUFACTURER. IF PUMP HAS MANUAL/AUTO SET, SWITCH TO MANUAL.

Installation of the **Oil Smart® water pump switch** allows you to comply with State and Federal regulations while reducing the risk of adverse publicity, fines and expensive cleanup costs. The **Oil Smart® water pump switch** prevents inadvertently pumping oil contaminated waste into the environment, improves the reliability of your electric system and provides a safe, dry work environment for your employees.

FUSING:

Follow the pump manufacturer's instructions. Do not exceed the Oil Smart® switch amp rating. **A portable device may not be attached to a permanent structure.**

THE INITIAL INSTALLATION:

should be in a clean environment, clear of mud and all metallic debris. The switch should be installed where the water intrusion will not directly contact or splash the switch body.

Mud and other **conductive** materials left on the body of the switch will hamper its operation. Effort must be taken to **clean the switch** prior to leaving initial installation.

CLEAN STRUCTURE:

requires minimum switch maintenance for a trouble-free operation. Install the switch so that on and off sensors clear any metallic material (earth, mud, concrete and all metals) by a minimum of 2".

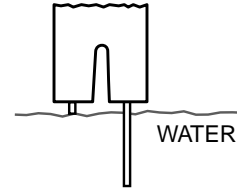
SWITCH MAINTENANCE:

The white plastic case must be clean of any conductive materials (dirt, soap or rust). Clean with alcohol.

OPERATION:

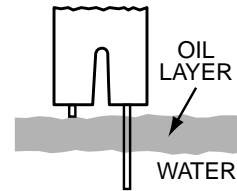
Normal Condition (Water Only)

The short sensor probe turns the pump "on" and the long sensor probe turns the pump "off". When the short sensor is in contact with water, the pump will continue to cycle "on and off" until the short sensor detects oil.



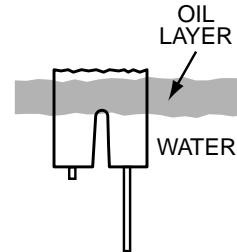
Oil Present Condition

The pump will not cycle if oil is in contact with the short sensor.



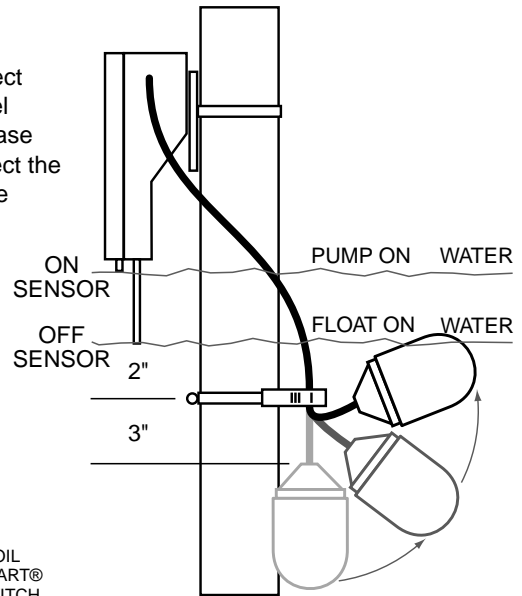
High Water (Oil Present Condition)

If additional water enters the basin, it will cause the oil layer to rise above the short sensor, resulting in the pump cycling.

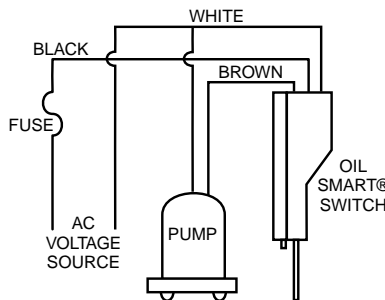


Using the Alligator Clamp

Alligator clamp enclosed, connect (tether) the float switch at a level that is in the "on" position. At least 2" below the "off" sensor, connect the alligator clamp on the float cable 3" from the float.



WIRING DIAGRAM



www.seewaterinc.com or www.oilsmart.org

951.487.8073 • 888.733.9283 • Email: seewaterinc@yahoo.com

121 North Dillon Street • San Jacinto, CA 92583

P.O. Box 1269 • San Jacinto, CA 92581

Printed in U.S.A.

Fail-Safe Technology since 1995.

SEE WATER Inc.
"OIL SMART" Water Pump Switches