

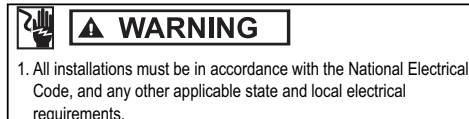
## Oil Smart® Simplex Panel (Model #OSSIM-TP-3-B)

### Oil Smart System:

The Oil Smart® System includes the Oil Smart® Water Pump Control and Oil Smart® High Liquid Alarm. The Oil Smart® Pump Controller, when combined with a manual pump, automatically pumps water from elevators, transformer containment barriers, underground vaults, substations, and other applications without the risk of pumping oil. While the Oil Smart® Alarm provides information to building management or maintenance personnel about leak or high liquid level conditions at any given location. The alarm will activate with the presence of any liquid/substance and will identify if oil or water is present. Since 1995, the Original and Patented Oil Smart System has been the reliable choice for safely pumping water. Installation of the Oil Smart System allows you to comply with State and Federal regulations while reducing the risk of adverse publicity, fines and expensive cleanup costs.

### Features:

- No Moving Parts. Patented Electronic Oil Smart® and Liquid Smart® Controls
- Indoor/Outdoor NEMA 4X Heavy Duty Polycarbonate Enclosure: 14"x12"x6", UL-50 Type 6P Listing or 16"x14"x7" (Main Disconnect)
- Voltage: 480VAC Three Phase 50/60Hz, 30 Amp Motor Start Relay
- CSA International Certified No. 229594
- External Mounting Feet: Quick Installation.
- High Liquid Alarm with Test and Silence Features, Red Beacon Alarm Light, White Light for Water Present, Yellow Light for Oil Present, High 84 Decibel Audible Alarm. Complete Dry Contacts for Each Alarm Condition.
- Oil Smart Pump Switch and Liquid Smart Alarm Sensor with 20' cord and mounting brackets.
- HOA Switch and Green Light for Pump Run
- Includes Pump Disconnect Circuit Breaker
- Total Pump Protection: No Load Lockout Protection, Pump Fault Signal and auxiliary contacts including Red Light pump lockout.
- Optional: Main Disconnect for 480V Protection



### Panel Installation:

- Caution: To maintain the NEMA 4X rating, make all wiring connections with seal tight cable grips or conduit connections to be supplied by end user.
  - I. Determine hole location on panel for liquid-tight or conduit connectors. Drill proper sized holes for conduit connections
  - II. Determine mounting location for control panel. Mount panel using mounting feet supplied
  - III. Attach connectors and conduits.
  - IV. Run pump cable, Liquid Smart® cable, and Oil Smart® cable through conduit. Make field connections as shown on wiring diagram (See Page 3)
  - V. Run power line conductor through conduit. Wire to terminals per enclosed schematic.

### Components Installation:

- I. Remove any float switch that is currently in use or supplied by manufacturer. If pump has manual/auto option, switch pump to manual position.
- II. Mount switches using mounting brackets provided. Do not attach to metal discharge pipe. If required, wrap insulated tape in between switch and pipe. Mount pump switch at least 3" above pump impeller to prevent from pumping oil. Mount Liquid Smart Alarm Switch at desired location to receive high liquid notification.

[www.seewaterinc.com](http://www.seewaterinc.com)  
or [www.oilsmart.org](http://www.oilsmart.org)  
951.487.8073 • 888.733.9283  
Email: [info@seewaterinc.com](mailto:info@seewaterinc.com)

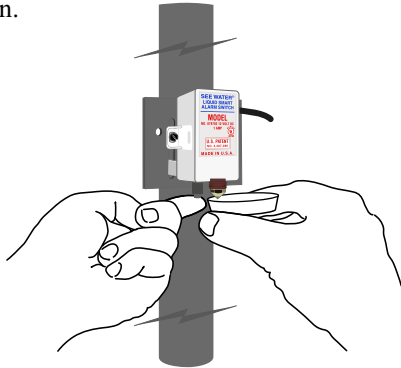
121 North Dillon Street • San Jacinto, CA 92583  
P.O. Box 1269 • San Jacinto, CA 92581



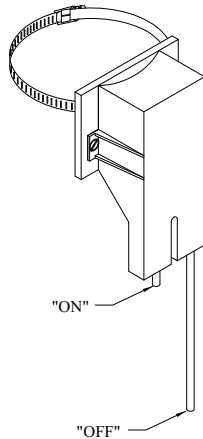
## Oil Smart® Simplex Panel (Model #OSSIM-TP-3-B)

### Testing:

- **Liquid Smart® Alarm Sensor:** Fill small cup supplied with oil. Submerge only the plastic lens (optic sensor) into oil, the alarm will activate showing oil present (yellow light). Now touch finger to the exposed stainless steel sensor, the alarm will show water present (white light) will turn on.



- **Oil Smart® Switch:** Place the HOA switch on control panel in the automatic position. Place your thumb on the short sensor of Oil Smart® Pump Switch and the pump will turn on. While touching the short sensor, touch the long sensor "off" with your fingers. Remove your thumb from on sensor and begin to move your fingers down the off sensor. Remove your fingers from off sensor and the pump will turn off.



### Oil Smart and Liquid Smart Maintenance:

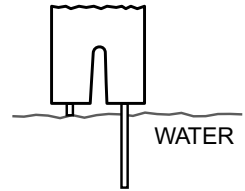
The Oil Smart Switch is designed for sump environments and tested to withstand the normal environment of a pump switch. The Liquid Smart Alarm Switch is designed to be used as a High Liquid or Leak Detection alarm switch.

*For 24 hour troubleshooting, call 888-733-9283*

### Operation:

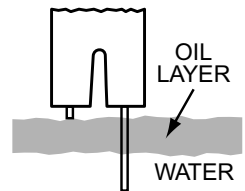
#### Normal Condition (Water Only)

The short sensor probe turns the pump "on" and the long sensor probe turns the pump "off". When the short sensor is in contact with water, the pump will continue to cycle "on and off" until the short sensor detects oil.



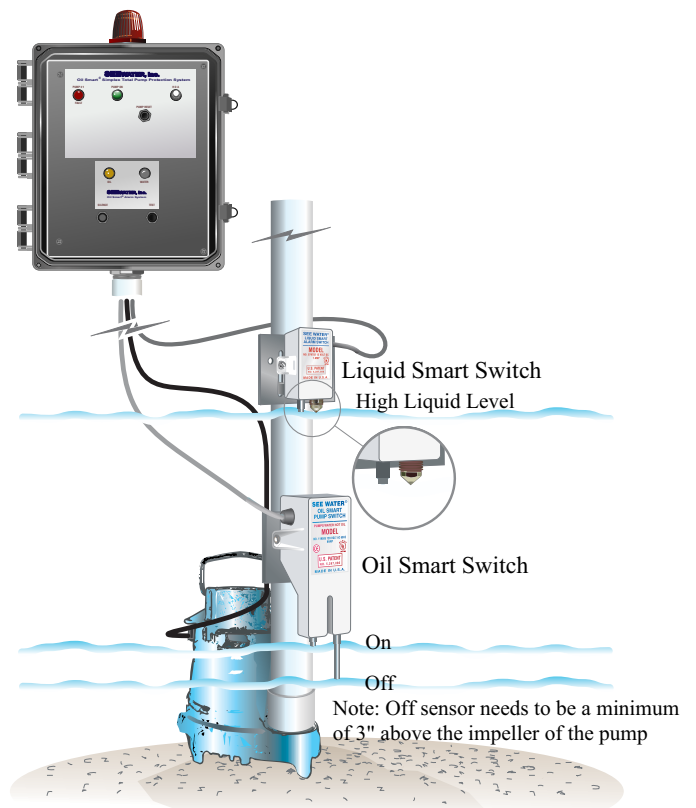
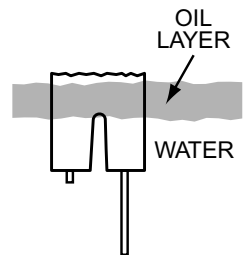
#### Oil Present Condition

The pump will not cycle if oil is in contact with the short sensor.



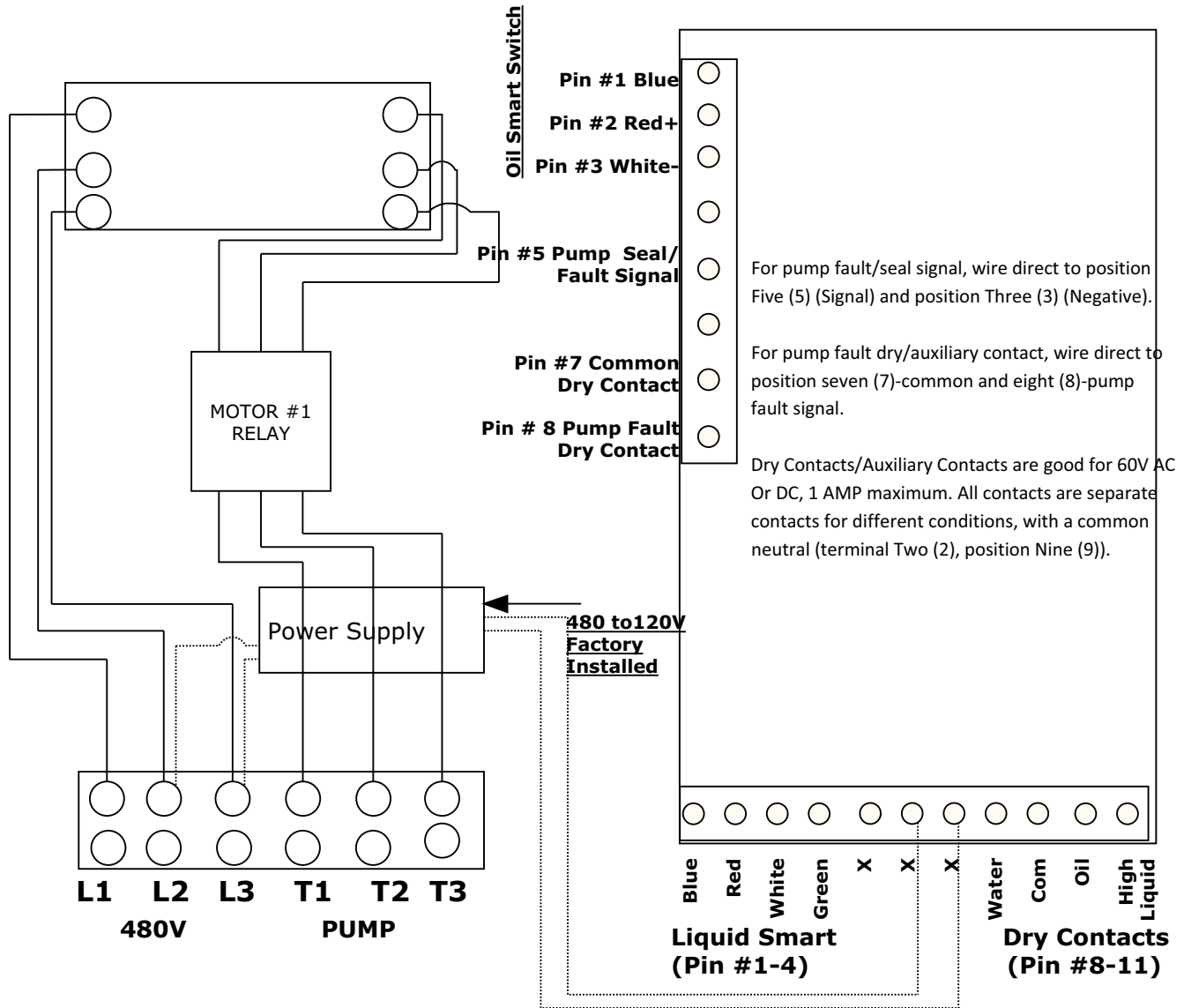
#### High Water (Oil Present Condition)

If additional water enters the basin, it will cause the oil layer to rise above the short sensor, resulting in the pump cycling.



- Data:**
- Pollution Degree 2
  - Installation Category II
  - Altitude 200m
  - Humidity up to 5% to 95%

### OSSIM-TP-3-B Field Wiring Connections



**WARNING**

480V Panel. Attach 480V 3-Wire Only. Panel comes with 480 to 120V power supply to Pin #6 & Pin #7 of circuit board.