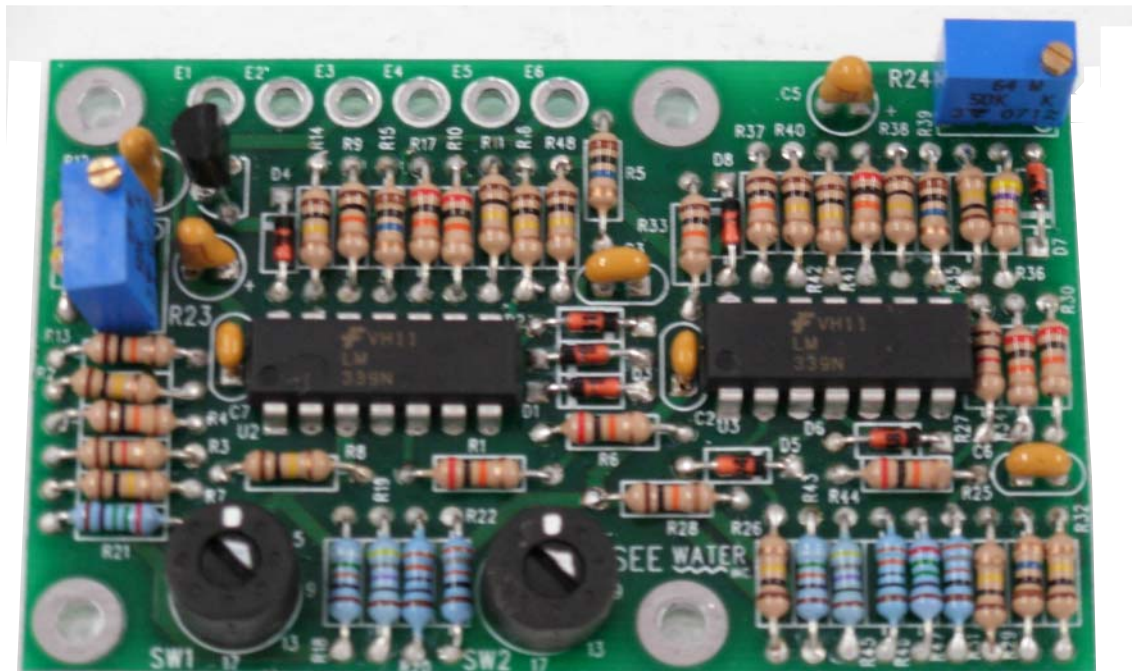


DIAL-AN-AMP

MOTOR LOCKOUT PROTECTION

FEATURES AND OPTIONS:

- Motor Lockout Protection for one or two pumps
- Select the lockout amps for your specific pump needs
- Use in conjunction with any SEEWATER simplex or duplex control panel (Except for Model # OSSIM-30)
- Standard lockout dial amps include: 3,5,9,13,17 or 8,11,14,17,20. Dial-An-Amp features are also available for larger pump sizes
- Please consult the factory for proper amp selection
- Add a -D to Model # when ordering Dial-An-Amp Feature



www.seewaterinc.com
or www.oilsmart.org

951.487.8073 • 888.733.9283

Email: info@seewaterinc.com

121 North Dillon Street • San Jacinto, CA 92583

P.O. Box 1269 • San Jacinto, CA 92581

Fail-Safe Technology since 1995.

SEEWATER
Inc.
"OIL SMART" Water Pump Switches